



20 Drysdale Street Sunbury VIC

3  1  2 

Situated on a block size of 648m² approximately the perfect opportunity awaits for those whom wish to fulfil their desire to renovate or knock down!! With a corner block and its potentials, subject to council approval, this property will have investors & developers jaws dropping. Side gate access from the backyard that leads onto the street, within walking distance to all amenities such as Sunbury township, Schools, shops, parklands and public transport. This is an opportunity for anyone looking for a potential subdivision a house on a corner block!!

Property Features include:

- ? 3 bedrooms, all with built-in robes
- ? Main central bathroom with separate toilet
- ? Kitchen with ample cupboards
- ? Electric cook top, oven and rangehood
- ? Living and dining area

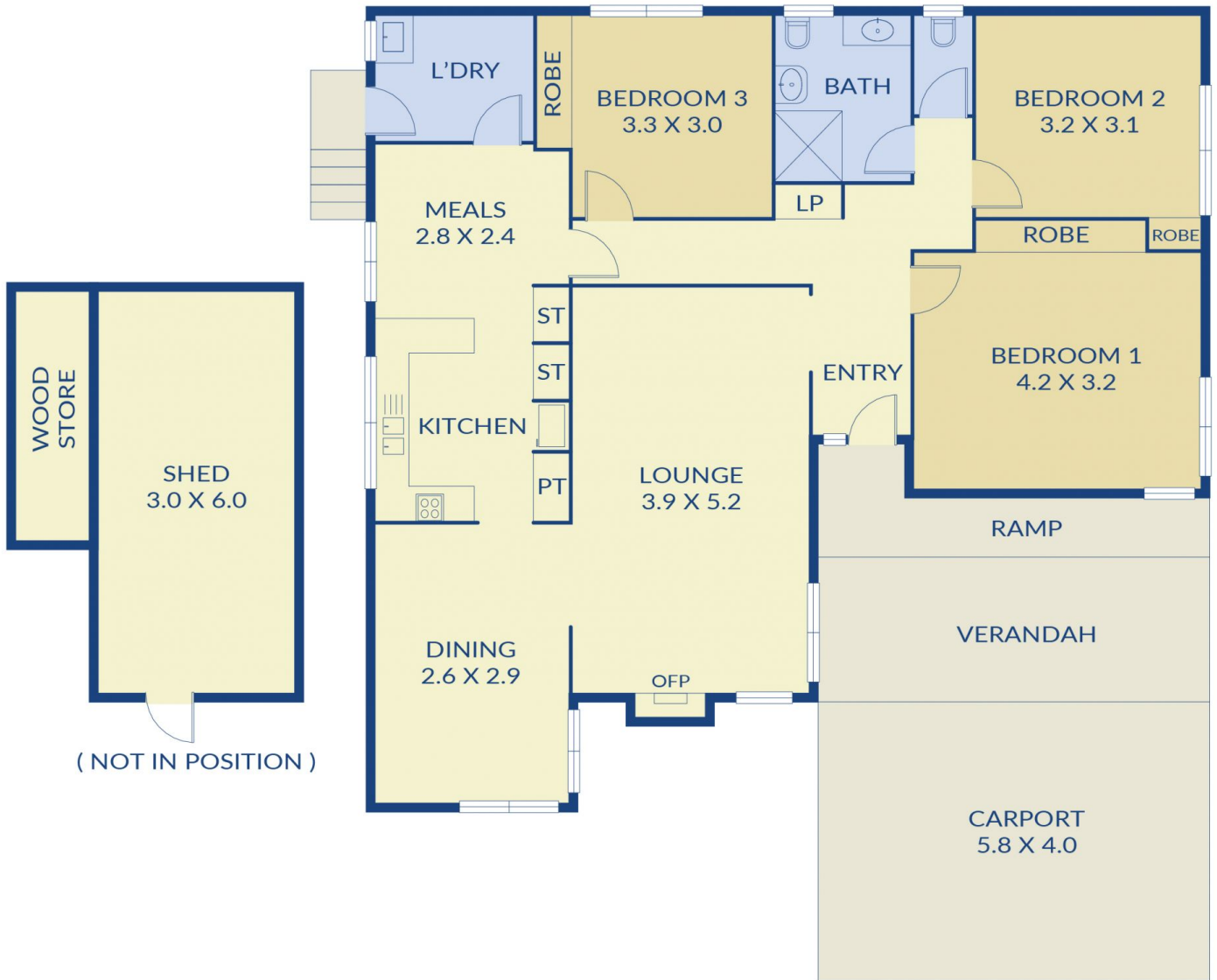
Price : \$ 520,000
Land Size : 648 sqm
View : <https://www.ypa.com.au/7388996>



Patrick Kilkenny
0401 175 248



Hayley Mayne
0497 972 028



ypa

20 Drysdale St, Sunbury

Note: Every precaution has been taken to verify the accuracy of the above detail. However, prospective purchasers are advised to make their own enquiries.