

2 Teal Court Sunbury VIC

3  2  5 

Located in the most sought-after pocket of the Goonawarra Estate and set on a very generous corner block size of 766m² (approx). This loving family home is conveniently located within walking distance to schools, shops, parklands, medical centre, the Goonawarra Golf Course and public transport! This gorgeous home will surely tick all the boxes and will leave its new owner very little to do as you would be able to enjoy a modern interior right though.

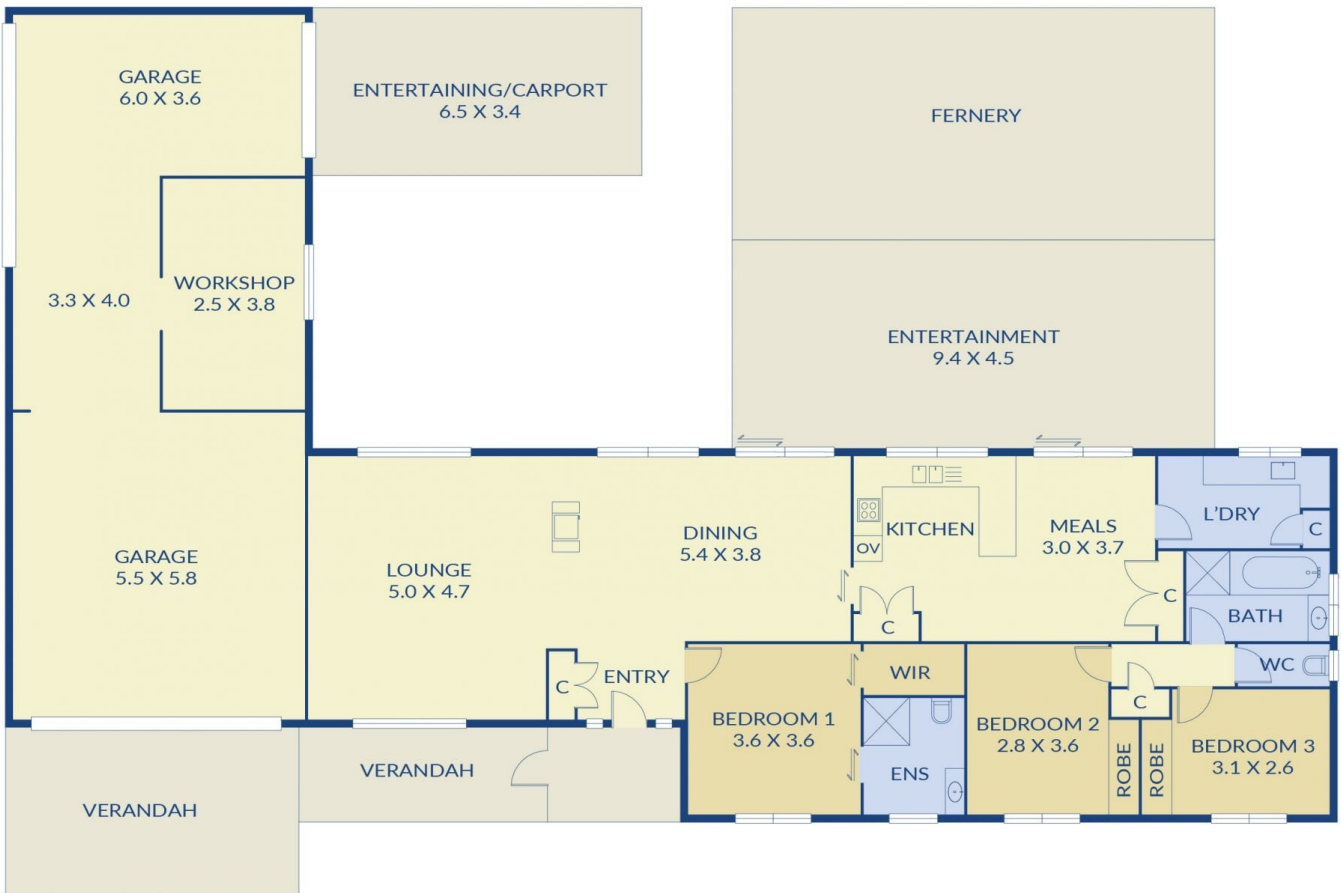
Price : \$ 590,000
Land Size : 766 sqm
View : <https://www.ypa.com.au/7388988>

Property features include:

- ? Master bedroom with walk-in robe and updated ensuite
- ? 3 bedrooms, all with built-in robe and ceiling fans
- ? Main central bathroom with separate toilet
- ? Kitchen with adjoining meals area and ample cupboard space, stainless steel Bosch appliances (gas cooktop, oven, rangehood & dishwasher)
- ? Double lounge area which is separated by a double-sided



Lisa Totaro
0410 144 215



ypa

2 Teal Crt, Sunbury

Note: Every precaution has been taken to verify the accuracy of the above detail. However, prospective purchasers are advised to make their own enquiries.