

31 Bundanoon Avenue Sunbury VIC

4 3 2

Nestled in the heart of Canterbury Hills Estate, this family home offers the full package with all amenities at your fingertips. This is an opportunity you do not want to miss out on, set on a generous block of (approx.) 702m² and rear access into the back yard. Conveniently located within easy access to the Calder Freeway, schools, and with proximity to walking tracks and parklands including Spavin Drive Lake, makes for a great location! This is an ideal opportunity for a first home buyer with that growing family or a savvy investor.

Property features include:

- ? 4 bedrooms, all with built-in robes
- ? Master bedroom with walk in robe and en-suite
- ? Main central bathroom with separate toilet located upstairs
- ? With an additional bathroom located downstairs

Price : \$ 670,000
Land Size : 702 sqm
View : <https://www.ypa.com.au/7388982>



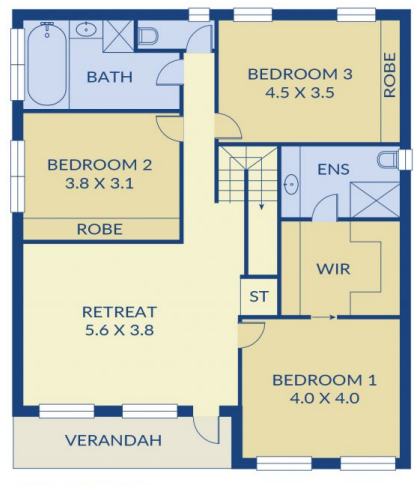
Patrick Kilkeny
0401 175 248



Hayley Mayne
0497 972 028



GROUND FLOOR



FIRST FLOOR