



## 30 Holloway Close Sunbury VIC

3 2 1

Opportunities don't come much bigger or better than this! Situated in a quiet court in the highly sought after and respected Gum Tree Hills Estate on a block size of approximately 763m<sup>2</sup>, this is your foray to owning your own home or investment property! Within close proximity to schools, walking trails, shops and public transport you simply cannot beat this location.

Property features include:

- ? 3 bedrooms, all with built-in robes
- ? Master bedroom complete with walk-in robe and ensuite
- ? Open plan kitchen and dining area along with a spacious L shaped living area
- ? Kitchen complete with gas cooktop, oven, ample bench space & cupboards
- ? Laundry with external access
- ? Gas wall heater & split system heating and cooling

**Price** : \$ 525,000  
**Land Size** : 763 sqm  
**View** : <https://www.ypa.com.au/7388954>



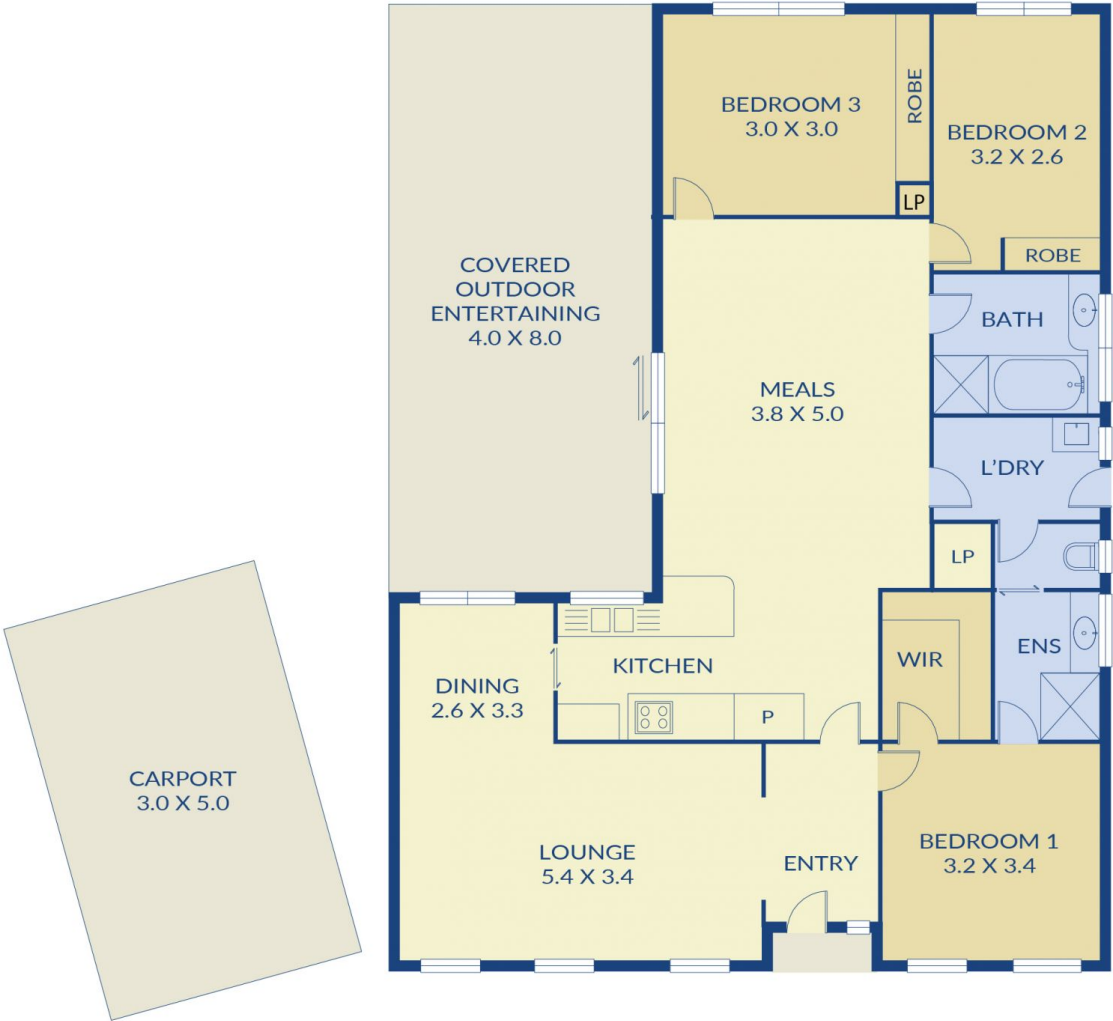
**Patrick Kilkeny**  
0401 175 248



**Hayley Mayne**  
0497 972 028



NOT IN POSITION



**ypa**

30 Holloway Close, Sunbury