



## 18 Kingsley Drive Sunbury VIC

3  2  2 

Perfectly positioned on a very generous 676m<sup>2</sup> approx of land is this stunning residence situated in the much-desired Langama Estate! The beauty of being in this Estate is that you literally have everything at your fingertips. Enjoy the convenience of having access to Rosenthal Shopping Centre, Sunbury's township, public transport at the end of the street, The Calder Freeway is moments away, a number of schools, local sporting clubs and much, much more!

This beautifully cared for home includes:

- ? 3 Bedrooms, master with walk-in robe and ensuite
- ? All bedrooms with built-in robes and ceiling fans
- ? Kitchen with ample cupboards and stainless-steel appliances (gas cook top, rangehood, oven and dishwasher)
- ? Spacious open living area

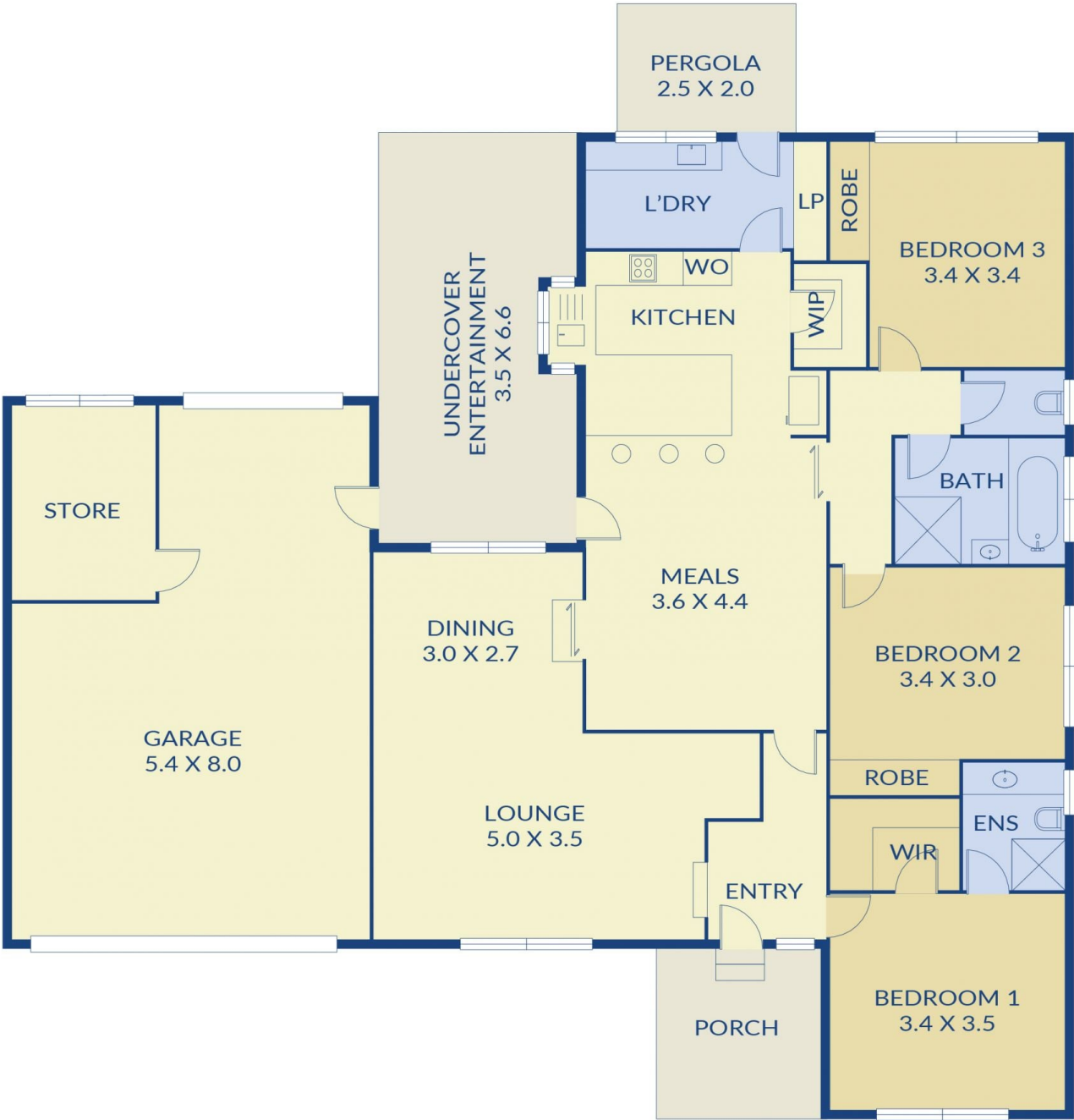
**Price** : \$ 580,000  
**Land Size** : 676 sqm  
**View** : <https://www.ypa.com.au/7388912>



**Lisa Totaro**  
0410 144 215



( NOT IN POSITION )



18 Kingsley Drive, Sunbury