



## 11 Latrobe Court Sunbury VIC

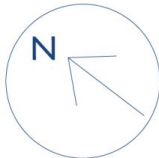
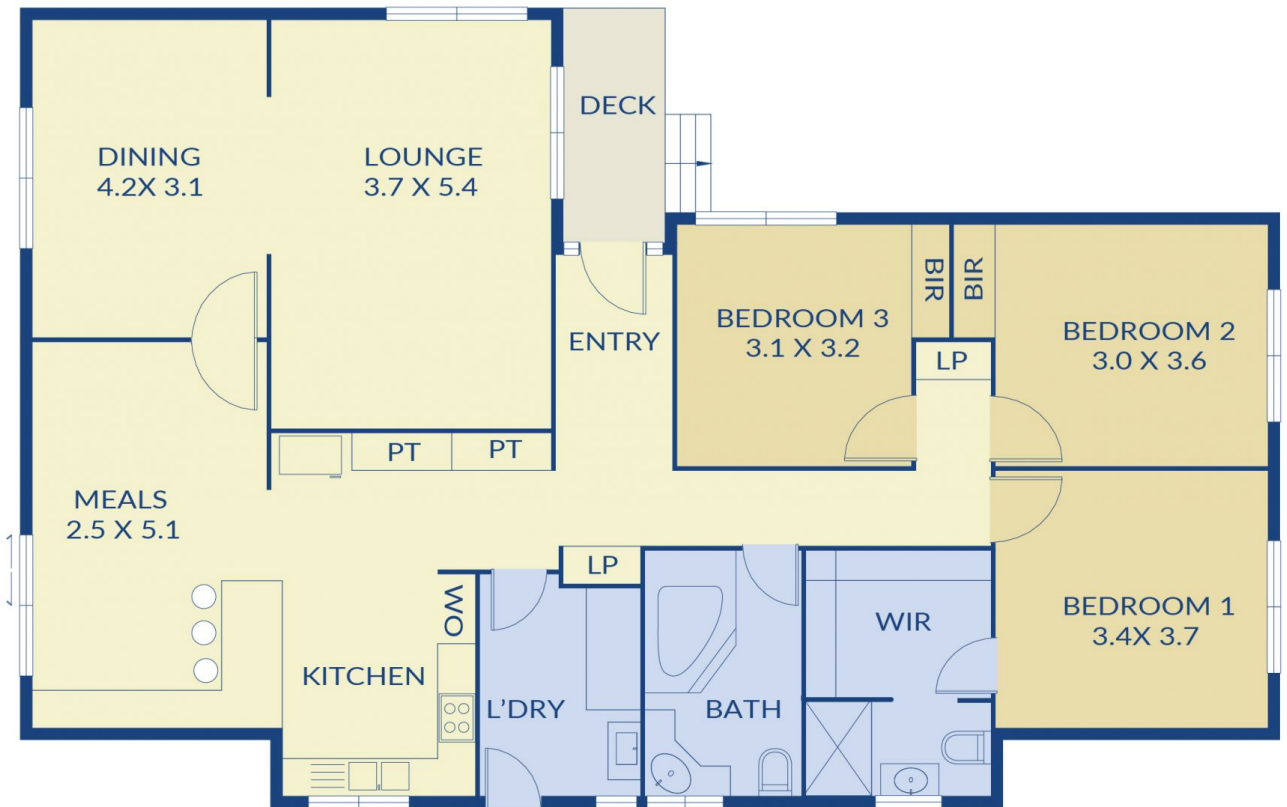
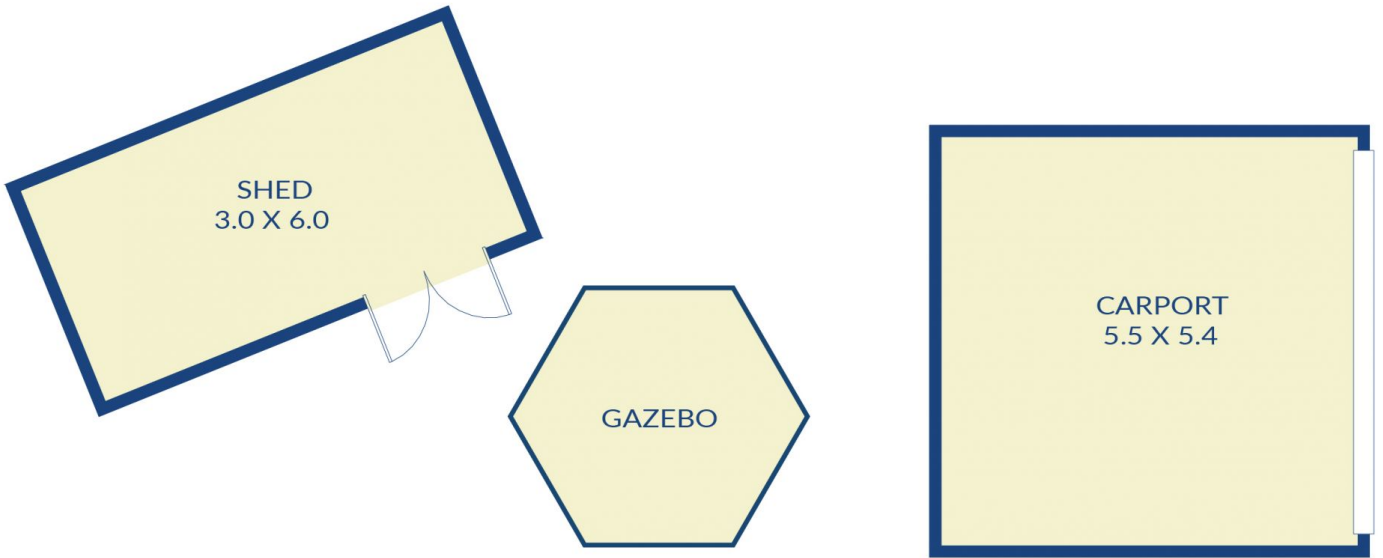
3 2 2

Situated in the highly desirable Gumtree Hills Estate, at the end of a quiet court with miles of walking tracks and stunning parkland at your doorstep, this warm and welcoming family home certainly screams location, location, location!! On a great sized block of approximately 676m<sup>2</sup> with established gardens plus a mere stones throw to Primary Schools and Kinder along with easy walking distance to High Schools and the Sunbury Township.

**Price** : \$ 550,000  
**Land Size** : 676 sqm  
**View** : <https://www.ypa.com.au/7388861>

### Property features:

- ? 3 bedrooms all with built-in robes and master complete with modernised ensuite & walk-in robe
- ? Spacious family bathroom complete with spa bath
- ? 2 separate living areas
- ? Spacious timber kitchen is the heart of the home and boasts ample storage, streamline built in microwave, gas cooktop & dishwasher



**ypa**

11 Latrobe Court, Sunbury