



6 Kippax Street Sunbury VIC

3  2  2 

On a large block with great side access, this property will tick many boxes before you even set foot through the front door. With dual living spaces, 3 bedrooms plus study or 4th bedroom, open plan kitchen and generous outdoor entertainment space, this property keeps getting better and better!! Situated towards the front of the highly desirable Ashfield Estate on a block size of approximately 725m² with nearby schools, sporting clubs and facilities, playgrounds, parklands and easy access to the Calder Freeway or Sunbury Town centre. In an instant you'll fall in love with this family home with so much to offer.

Price : \$ 630,000

Land Size : 725 sqm

View : <https://www.ypa.com.au/7388848>

Property features include:

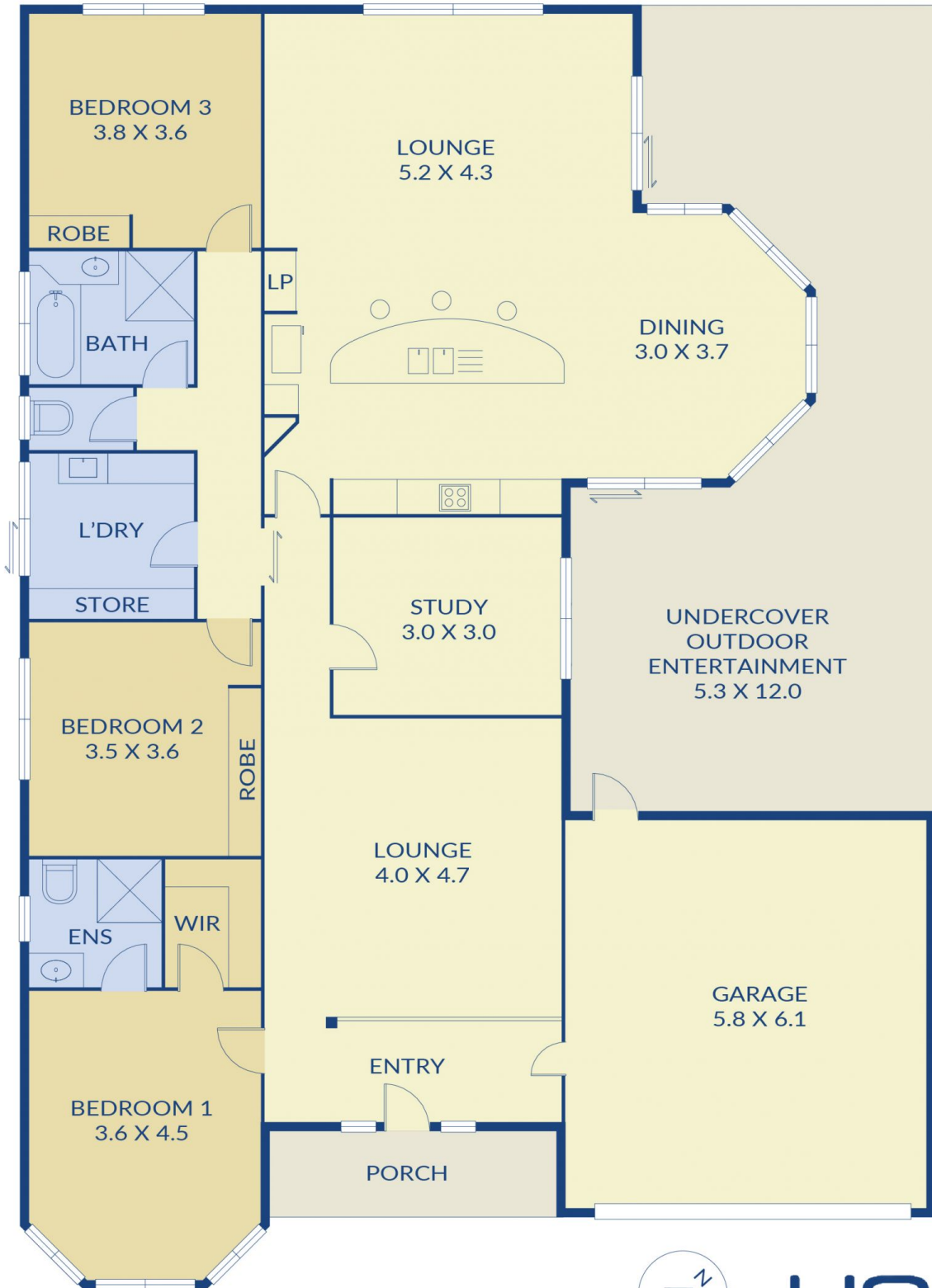
? 3 good sized bedrooms, all with built-in robes and day & night blinds

? Master bedroom with walk-in robe and ensuite

? Central main bathroom with separate toilet



(NOT IN POSITION)



ypa

6 Kippax Street, Sunbury