

## 248 Elizabeth Drive Sunbury VIC

3  1 

First home buyers, investors, developers or anyone looking to get into the property market this spectacular opportunity is perfect for anyone looking to get involved in the property market. Set on approx. 760m<sup>2</sup> of land and an uninterrupted outlook to the Blind Creek Reserve. With close proximity to everything that Sunbury has to offer such as Sunbury square town centre, schools, public transport, restaurants and walking trails from your own backyard!! Positioned in a prime location that is very rare to see in today's market.

**Price** : \$ 465,000  
**Land Size** : 760 sqm  
**View** : <https://www.ypa.com.au/7388826>

Property features include:

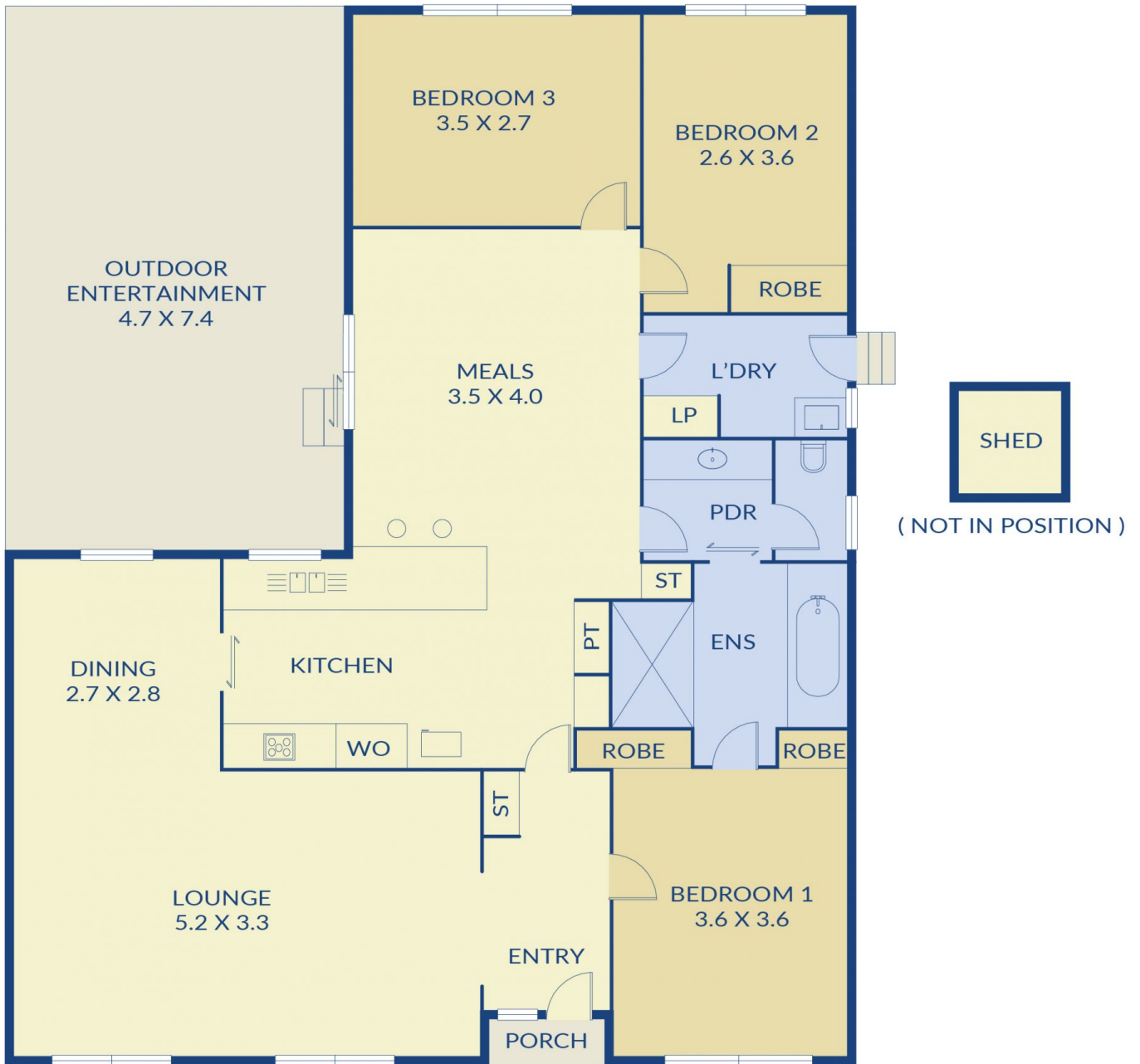
- ? 3 Bedrooms (2 Bedrooms with built-in robes)
- ? 2-way main bathroom with separate toilet
- ? Kitchen complete with ample cupboards, gas cook top, oven and grill
- ? Open plan dining
- ? Living area



**Patrick Kilkenny**  
0401 175 248



**Hayley Mayne**  
0497 972 028



**ypa**

**248 Elizabeth Drv, Sunbury**

Note: Every precaution has been taken to verify the accuracy of the above detail. However, prospective purchasers are advised to make their own enquiries.