

## 20 Westward Ho Drive Sunbury VIC

3  2  2 

This home is ideally located in the popular Goonawarra Estate, only a stroll away from nearby parklands & schools, and a short drive to Sunbury's town centre with fabulous cafes, eateries and shopping. Situated on a generous block size of 670m<sup>2</sup> (approx) with plenty of space for the kids to play & to entertain. If you're looking for a move in ready home this is one not to let pass you by!

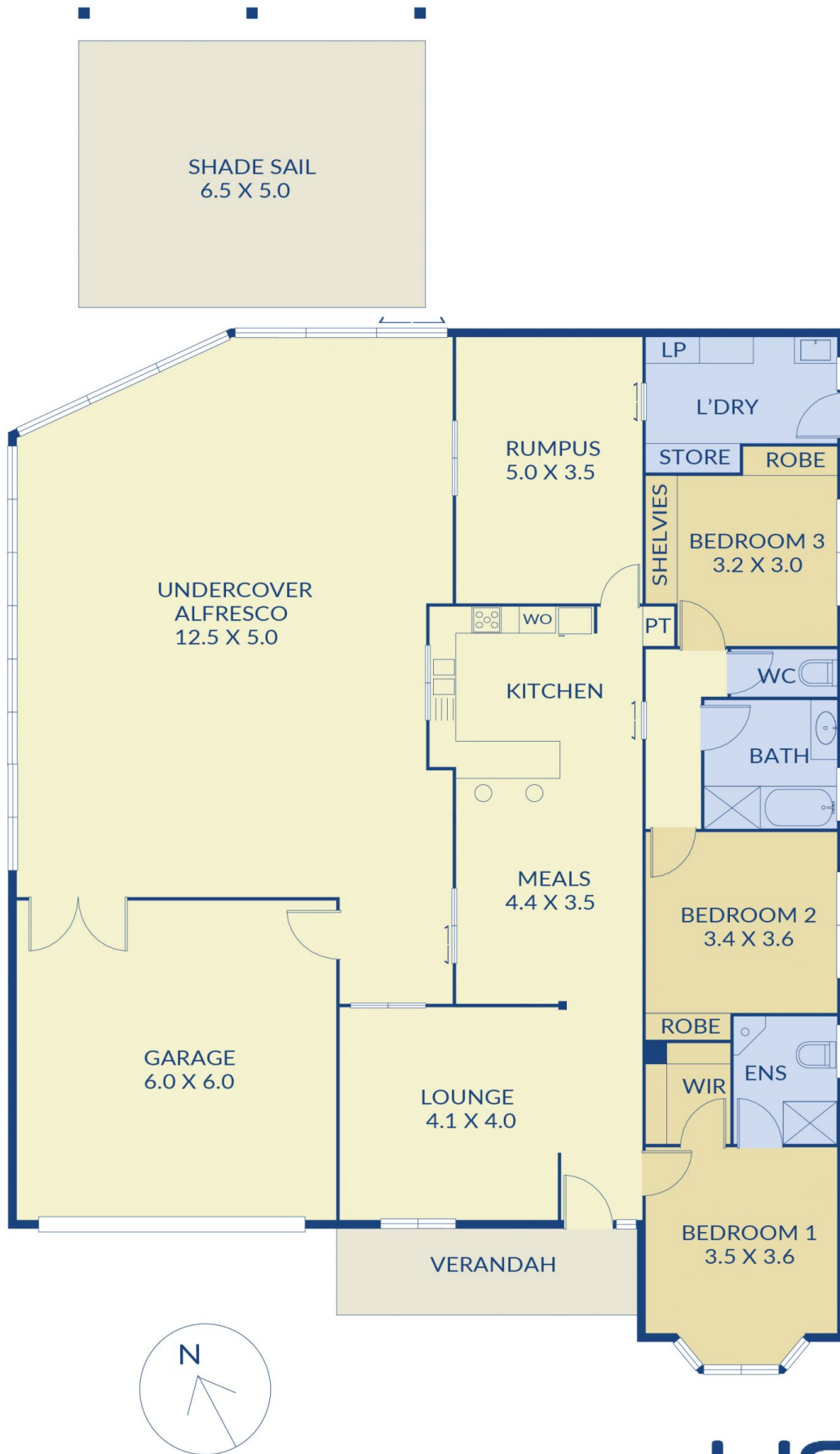
**Price** : \$ 480,000  
**Land Size** : 670 sqm  
**View** : <https://www.ypa.com.au/7388823>

### Property features:

- ? 3 Bedrooms all with built in robes, master complete with walk-in robe and ensuite
- ? Main bathroom with separate toilet
- ? Open plan kitchen, living and dining area
- ? Kitchen complete with dishwasher, gas cooktop and oven
- ? 2 separate living areas
- ? Ducted heating and split system cooling
- ? Laundry with external access



**Lisa Totaro**  
**0410 144 215**



32 sq  
Total Approx

Sizing is an approximate guide, prospective purchasers are advised to make their own enquiries.

ypa

20 Westward Ho Drive, Sunbury