



## 49 McEwen Drive Sunbury VIC

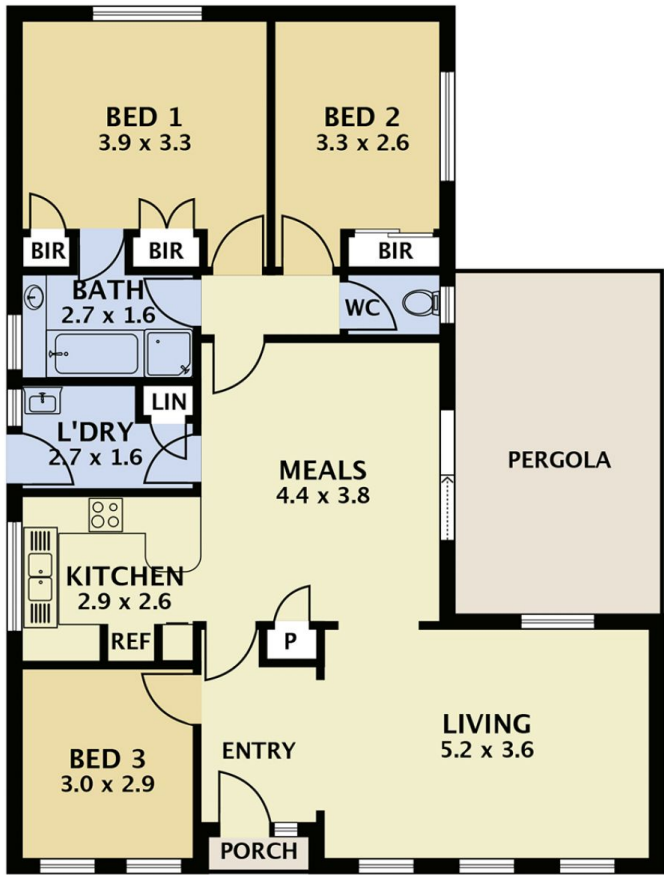
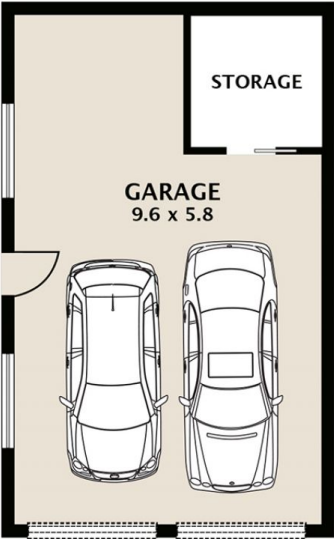
3  1  4 

A much-loved home in a wonderful leafy part of town all situated on a fabulous allotment of 657m<sup>2</sup> (approx.), extremely close and an easy stroll to local shops, Schools and childcare plus parklands and walking trails that link to Spavin Drive Lake and more. A great pocket of Town known as Gum Tree Hills Estate is an absolute gem of Sunbury where wide streets, established trees and a family friendly neighbourhood await one very lucky new owner.

**Price** : \$ 580,000  
**Land Size** : 657 sqm  
**View** : <https://www.ypa.com.au/7388803>

### Property features include:

- ? 3 bedrooms, two with built-in robes
- ? Master bedroom with two-way access to the bathroom
- ? Family room with plenty of natural light
- ? Kitchen with ample cupboard space, built-in pantry, gas cooktop and electric oven
- ? Kitchen overlooks the meals area, also with plenty of natural light



**49 Mcewen Drive Sunbury**

DISCLAIMER  
 PLANS SHOWN ARE FOR MARKETING PURPOSES ONLY, ALL DIMENSIONS ARE APPROXIMATE AND NOT TO SCALE. THEY ARE SUBJECT TO ERRORS AND INACCURACIES AND NO LIABILITY WILL BE ACCEPTED. INTERESTED PARTIES SHOULD MAKE THEIR OWN INQUIRIES.