



4 Kippax Street Sunbury VIC

3  2  1 

Step into this very neatly presented home and be impressed with the natural light filled living areas, neutral colour palette, comfort and how spacious the home is. Located in the popular Ashfield Estate on a pretty tree lined street, this property sits on an easy to maintain 331m² (Approx.) block and offers a brilliant opportunity - whether you're a first home buyer, retiree/downsizer or the clever investor, this home is ready to move in and only needs you to complete the package!

Property features include:

- ? 3 Bedrooms with built in robes - master complete with walk in robe and full ensuite
- ? Central bathroom with separate toilet
- ? Light & bright kitchen overlooking dining
- ? Kitchen complete with stainless steel oven, gas cooktop & dishwasher

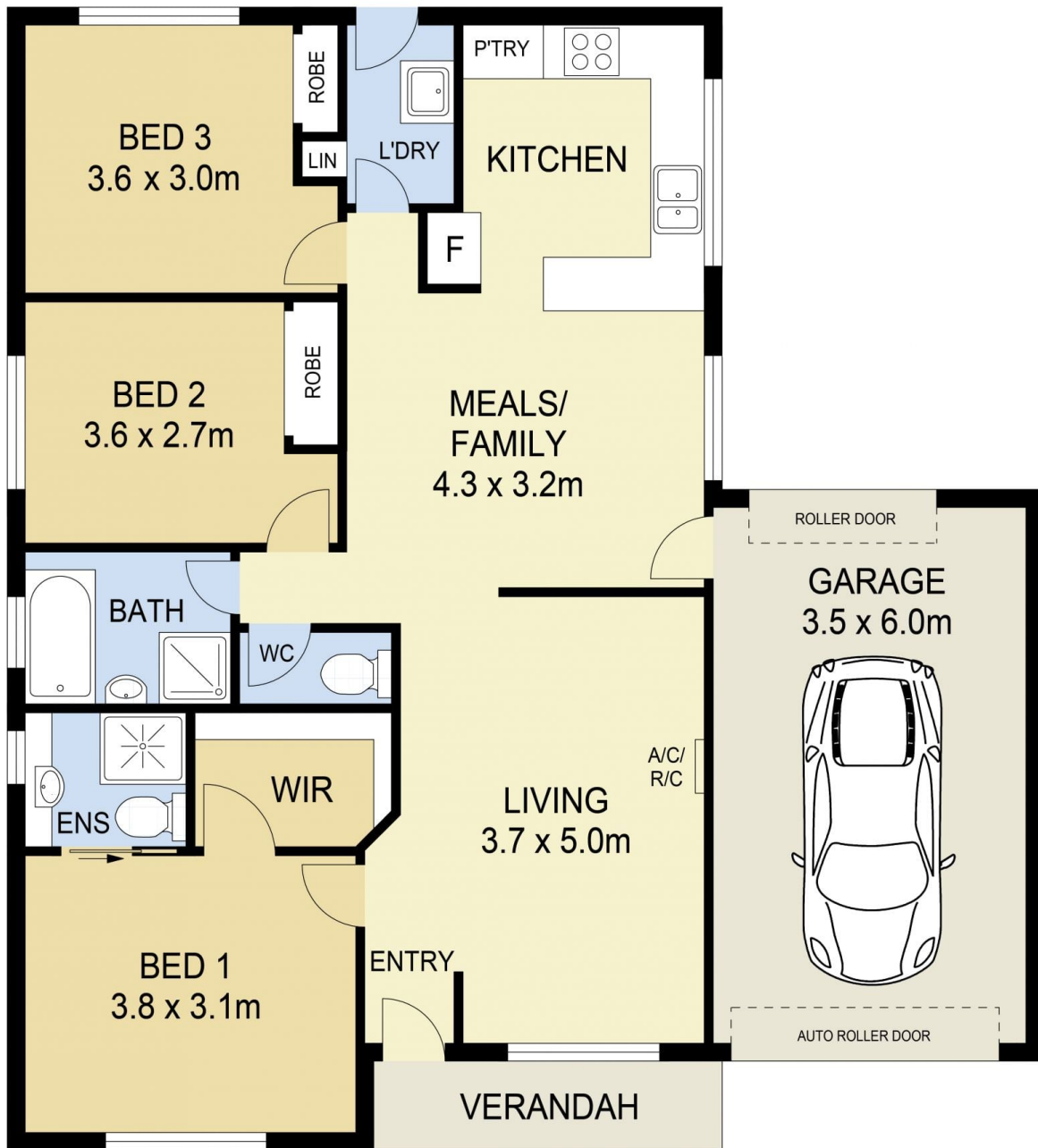
Price : \$ 475,000

Land Size : 331 sqm

View : <https://www.ypa.com.au/7388779>



Lisa Totaro
0410 144 215



4 KIPPAX STREET, SUNBURY

DISCLAIMER

PLANS SHOWN ARE FOR MARKETING PURPOSES ONLY. ALL DIMENSIONS ARE APPROXIMATE AND NOT TO SCALE. THEY ARE SUBJECT TO ERRORS AND INACCURACIES AND NO LIABILITY WILL BE ACCEPTED. INTERESTED PARTIES SHOULD MAKE THEIR OWN INQUIRIES.