



391 Elizabeth Drive Sunbury VIC

3  2  2 

Offering an opportunity too good to pass up! Nestled in a convenient location set on an impressive 660m² block (approx.) this exceptional and low-maintenance lifestyle awaits you. With local schools, shops and public transport all at your fingertips and Only moments to the thriving Sunbury town centre, this home offers a world of opportunities. Whether you're a first home buyer, savvy investor looking to add to your Portfolio this one is sure to tick all the boxes!

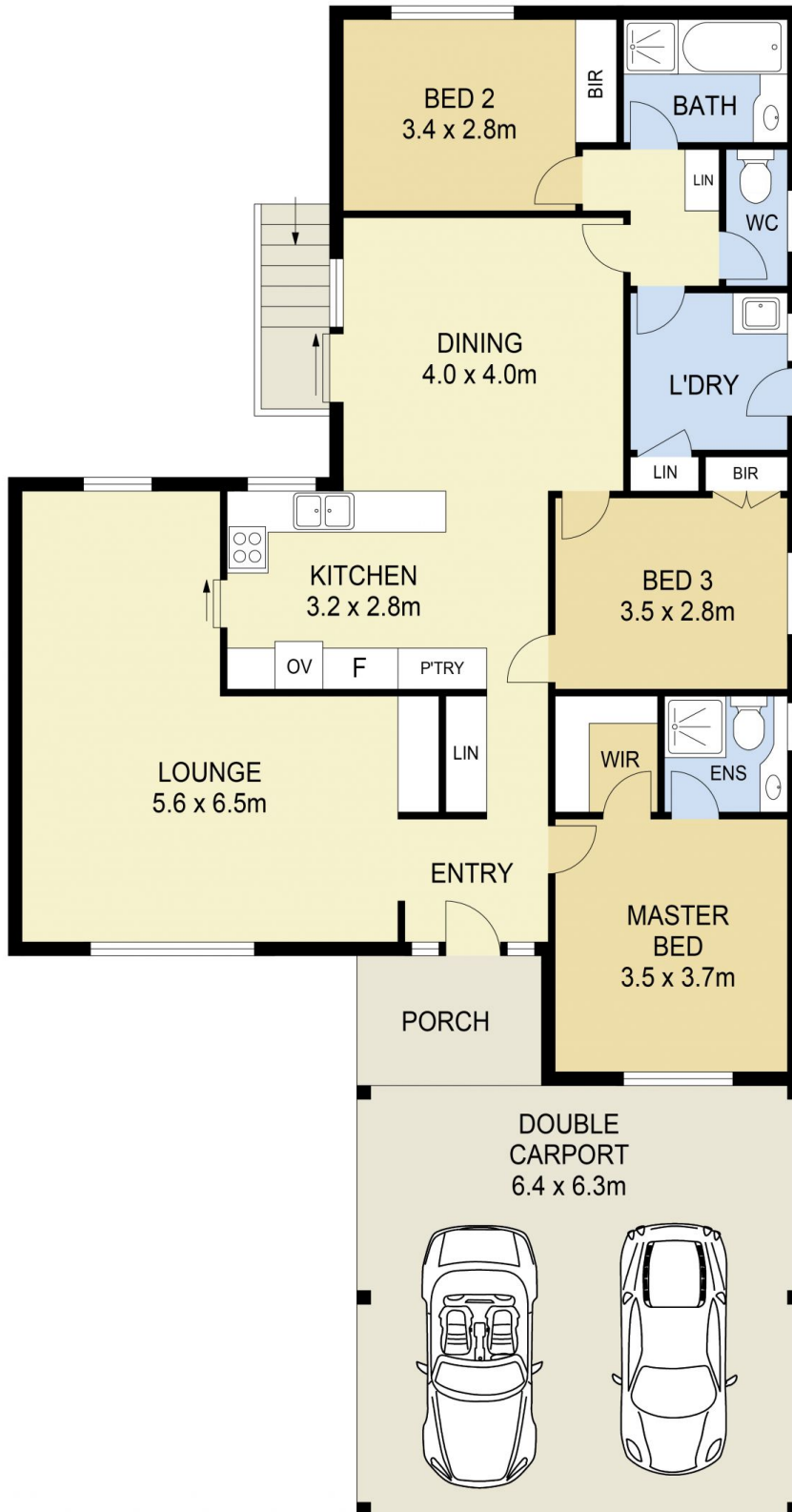
Property features include:

- ? 3 Bedrooms with built in robes - Master complete with ensuite
- ? Central bathroom with separate toilet
- ? Spacious kitchen overlooking dining and family area
- ? Kitchen complete with oven and gas cooktop
- ? Light & bright living area
- ? Ducted heating

View : <https://www.ypa.com.au/7388774>



Lisa Totaro
0410 144 215



391 ELIZABETH DRIVE, SUNBURY

DISCLAIMER

PLANS SHOWN ARE FOR MARKETING PURPOSES ONLY. ALL DIMENSIONS ARE APPROXIMATE AND NOT TO SCALE. THEY ARE SUBJECT TO ERRORS AND INACCURACIES AND NO LIABILITY WILL BE ACCEPTED. INTERESTED PARTIES SHOULD MAKE THEIR OWN INQUIRIES.