



5 Healy Avenue Sunbury VIC

3  2  1 

There is immediately a lot to love about this property which quickly becomes apparent from the moment you enter this special home. Peacefully nestled on a block size of 332m2 (approx.) and superbly positioned to provide a lifestyle of convenience - Located in the highly sought-after and BOOMING Ashfield Estate, within close proximity to all amenities including schools, child care facilities, public transport, beautiful reserves and parklands, the thriving township, new Rosenthal shopping centre and easy access to the Calder Freeway.

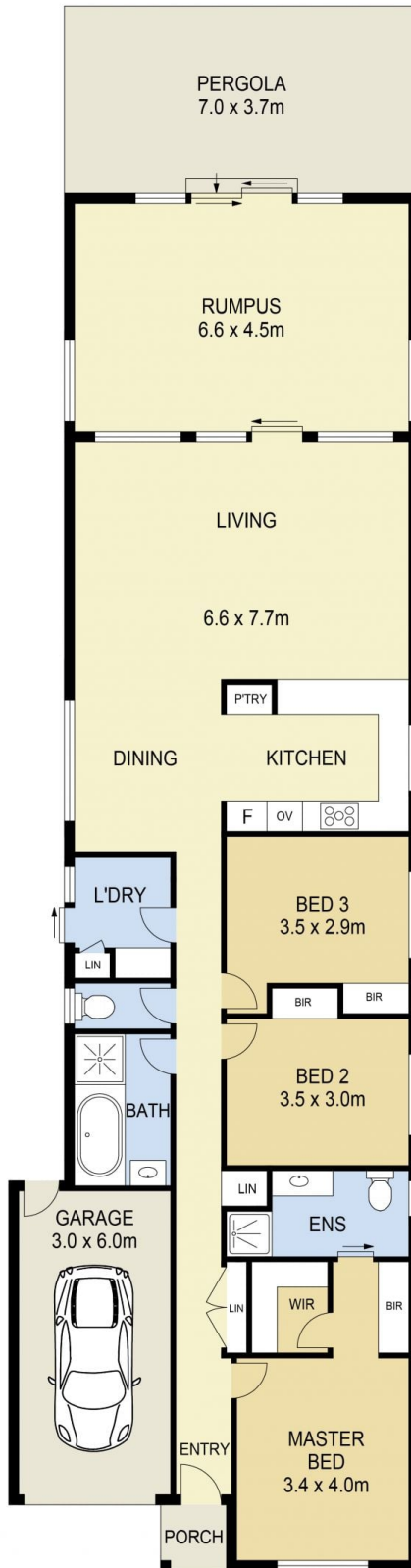
Property features include:

- ? 3 Bedrooms with built in robes - Master complete with his and hers robes & full ensuite
- ? Central bathroom with separate toilet
- ? Spacious kitchen overlooking dining and living area
- ? Kitchen complete with quality appliances; oven, gas cooktop & dishwasher

View : <https://www.ypa.com.au/7388739>



Lisa Totaro
0410 144 215



5 HEALY AVENUE, SUNBURY

DISCLAIMER

PLANS SHOWN ARE FOR MARKETING PURPOSES ONLY. ALL DIMENSIONS ARE APPROXIMATE AND NOT TO SCALE. THEY ARE SUBJECT TO ERRORS AND INACCURACIES AND NO LIABILITY WILL BE ACCEPTED. INTERESTED PARTIES SHOULD MAKE THEIR OWN INQUIRIES.