



## 30 Westward Ho Drive Sunbury VIC

3 2 1

This immaculate lovely property with a charming white picket fence, boasts a prime location within the highly desirable Goonawarra Estate.

Within walking distance of local convenience stores, sporting facilities, public transport, medical centre, pharmacy, kindergarten and primary school, as well as 15 mins to the airport and a mere 30 mins easy drive to the CBD. Flooded with natural sunlight in a quiet location close to parkland and walk trails, set on an incredible 620m<sup>2</sup> approx. Enjoy the convenience & lifestyle you have always craved!

Property features include:

3 Bedrooms with BIRS Master complete with ensuite

Central family bathroom

Open-plan Living / Dining & Kitchen

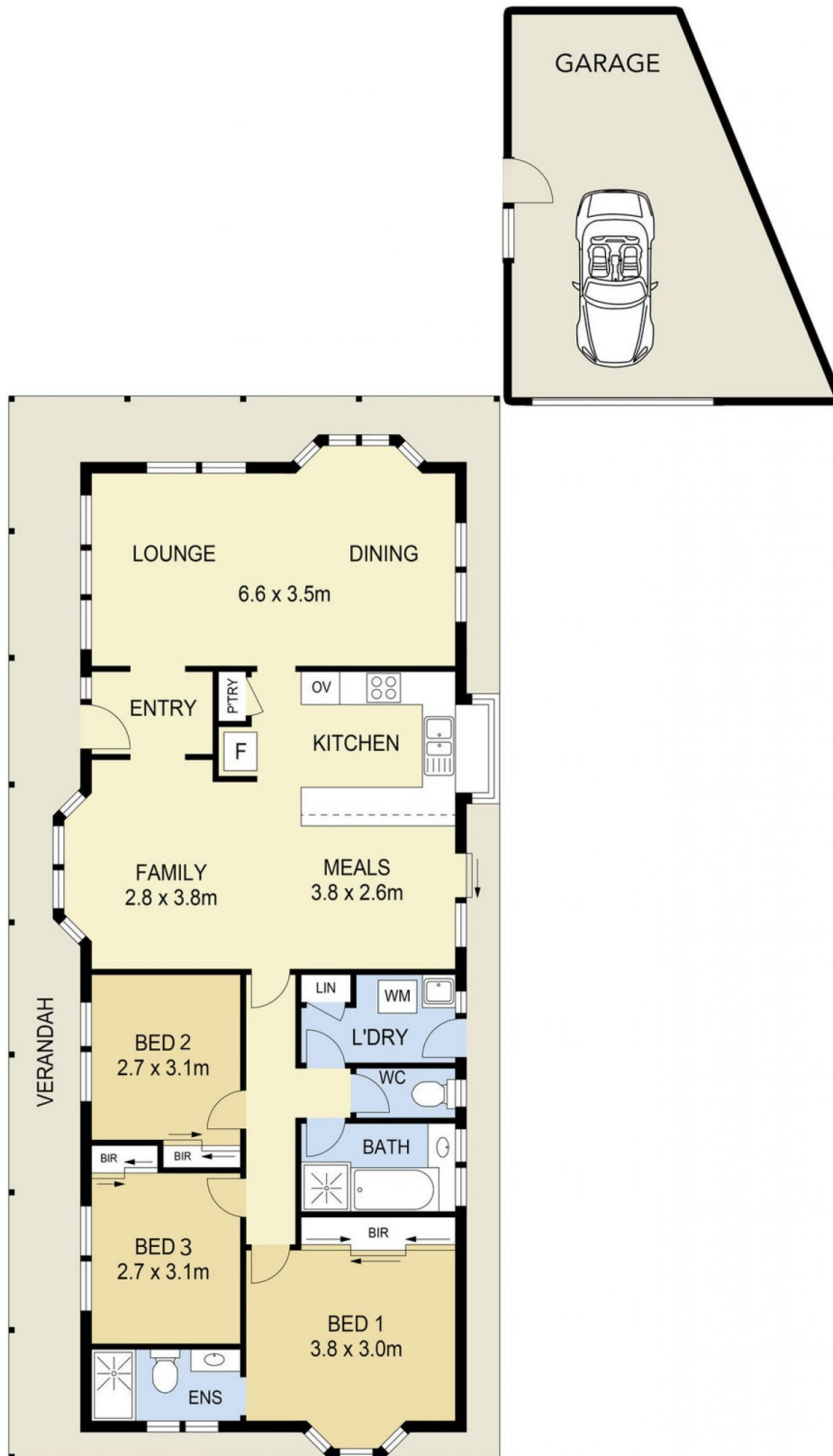
**Price** : \$ 464,000

**Land Size** : 620 sqm

**View** : <https://www.ypa.com.au/7388661>



**Lisa Totaro**  
0410 144 215



## 30 WESTWARD HO DRIVE, SUNBURY

**DISCLAIMER**

PLANS SHOWN ARE FOR MARKETING PURPOSES ONLY. ALL DIMENSIONS ARE APPROXIMATE AND NOT TO SCALE. THEY ARE SUBJECT TO ERRORS AND INACCURACIES AND NO LIABILITY WILL BE ACCEPTED. INTERESTED PARTIES SHOULD MAKE THEIR OWN INQUIRIES.