

7 McCabe Crescent SUNBURY VIC

4 2 2

Perfectly set on the sought after Ashfield Estate opposite Century Park, on a block of approximately 735m², this delightful home provides endless opportunities. As soon as you step through the door, you feel at home. Showcasing the well-planned layout with natural flow, you will fall in love with the North-facing living & outdoor entertaining areas, providing natural light in all the best places! With a selection of areas to either relax and unwind or play with the kids, this home is the definition of versatility.

Features Include:

Master bedroom with ensuite & generous walk-in wardrobe

3 Additional bedrooms complete with built-in-robos

Generous study

Theatre room (or kids playroom etc.)

3 Separate living areas

Open plan kitchen overlooking dining space & living area

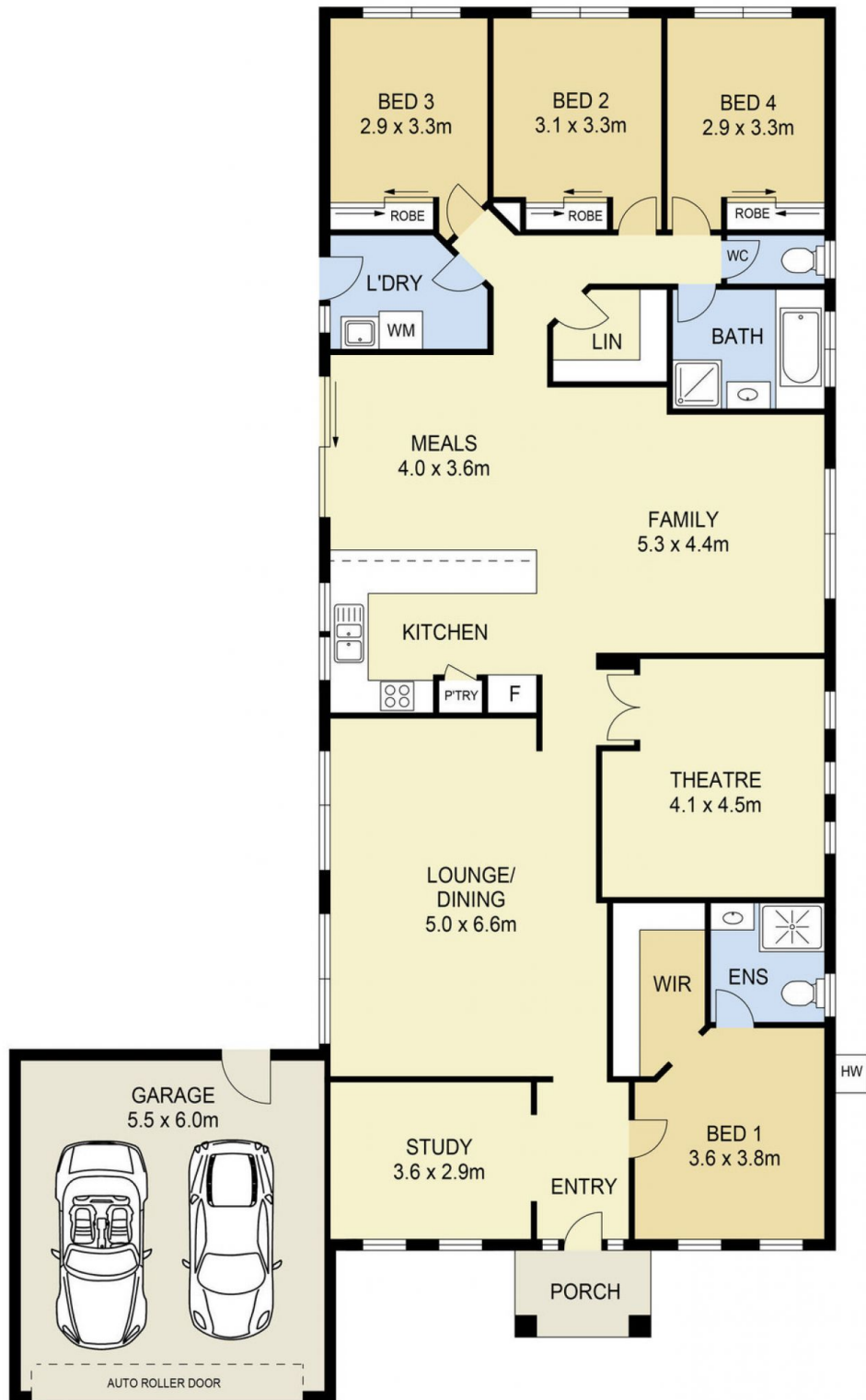
Kitchen complete with large bench space and plenty of

Land Size : 735 sqm

View : <https://www.ypa.com.au/7388645>



Lisa Totaro
0410 144 215



7 McCabe Crescent, Sunbury

DISCLAIMER

PLANS SHOWN ARE FOR MARKETING PURPOSES ONLY. ALL DIMENSIONS ARE APPROXIMATE AND NOT TO SCALE. THEY ARE SUBJECT TO ERRORS AND INACCURACIES AND NO LIABILITY WILL BE ACCEPTED. INTERESTED PARTIES SHOULD MAKE THEIR OWN INQUIRIES.