



## 11 Scotch Court SUNBURY VIC

3  2  2 

Neatly positioned within the Goonawarra Estate on a corner block of 573m<sup>2</sup>, this uniquely designed home represents great value & displays the perfect balance of character and functionality. Surprisingly spacious and light-filled, this home offers an abundance of areas to relax and entertain guests.

### Property Features Include:

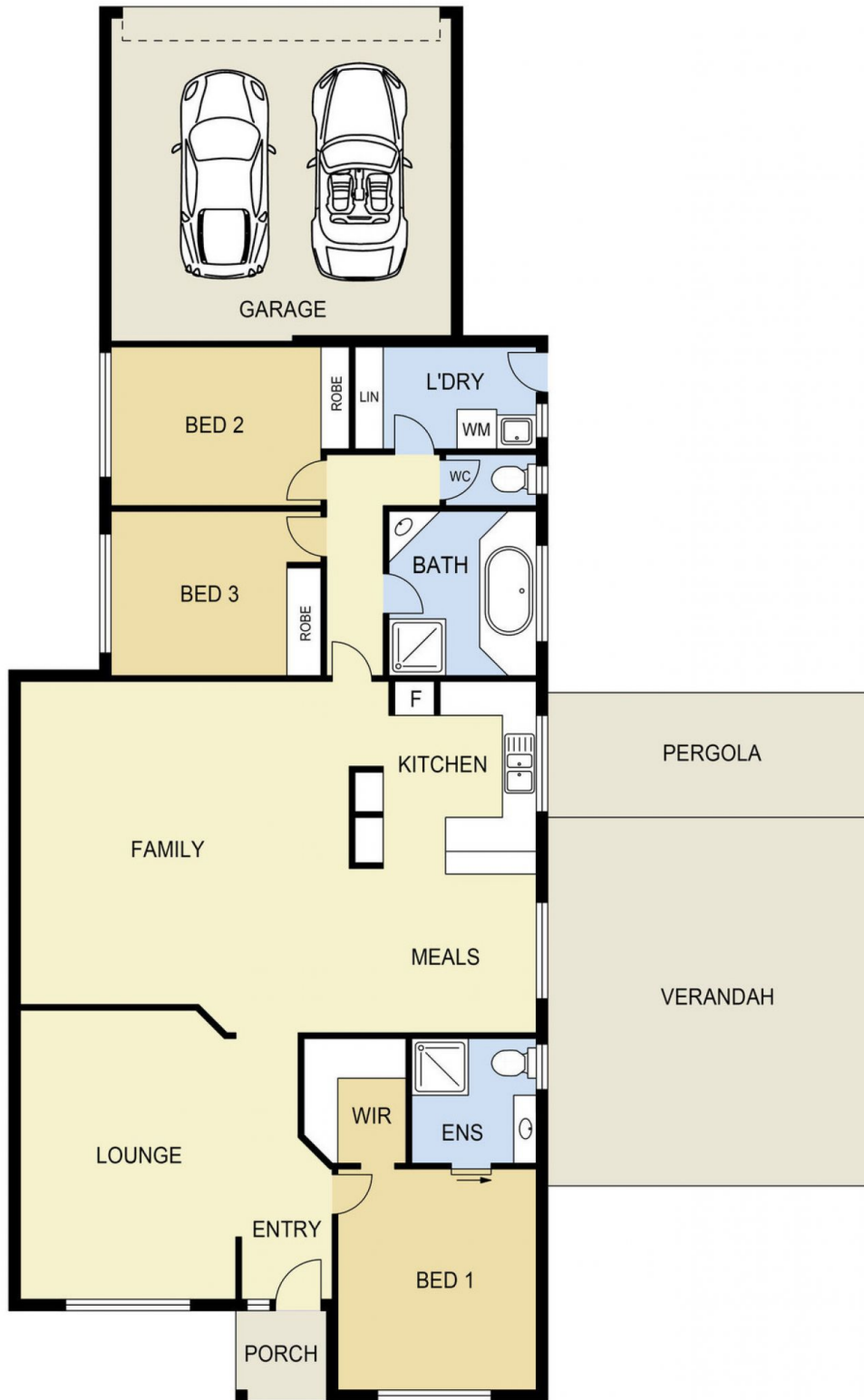
- Master bedroom complete with ensuite & walk-in wardrobe
- Additional 2 bedrooms with built-in robes
- Multiple living areas, one of which has vaulted ceilings
- Updated family bathroom with bathtub & separate toilet
- Laundry with in-built storage space and access to backyard
- Front decking (removable) with in-built lights
- Extensive pergola with merbau timber decking, in-built lighting around the edges of decking, retractable outdoor blind, ceiling fan, 2 linked speakers & matching outdoor bar

**Land Size** : 573 sqm

**View** : <https://www.ypa.com.au/7388639>



**Lisa Totaro**  
0410 144 215



## 11 SCOTCH COURT, SUNBURY

### DISCLAIMER

PLANS SHOWN ARE FOR MARKETING PURPOSES ONLY. ALL DIMENSIONS ARE APPROXIMATE AND NOT TO SCALE. THEY ARE SUBJECT TO ERRORS AND INACCURACIES AND NO LIABILITY WILL BE ACCEPTED. INTERESTED PARTIES SHOULD MAKE THEIR OWN INQUIRIES.