

## 90 Sorbonne Drive SUNBURY VIC

3  2  1 

Boasting with charm in a prime location within walking distance of sporting facilities, public transport, local convenience store, medical centre, pharmacy and primary school, as well as 15 minutes to the Airport and a mere 30 minutes approx of easy driving to Melbourne CBD, its no wonder people are already making the move to the booming Goonawarra Estate! Set on a low maintenance 360m<sup>2</sup> approx. block, enjoy the convenient lifestyle you have always craved!

Property features include:

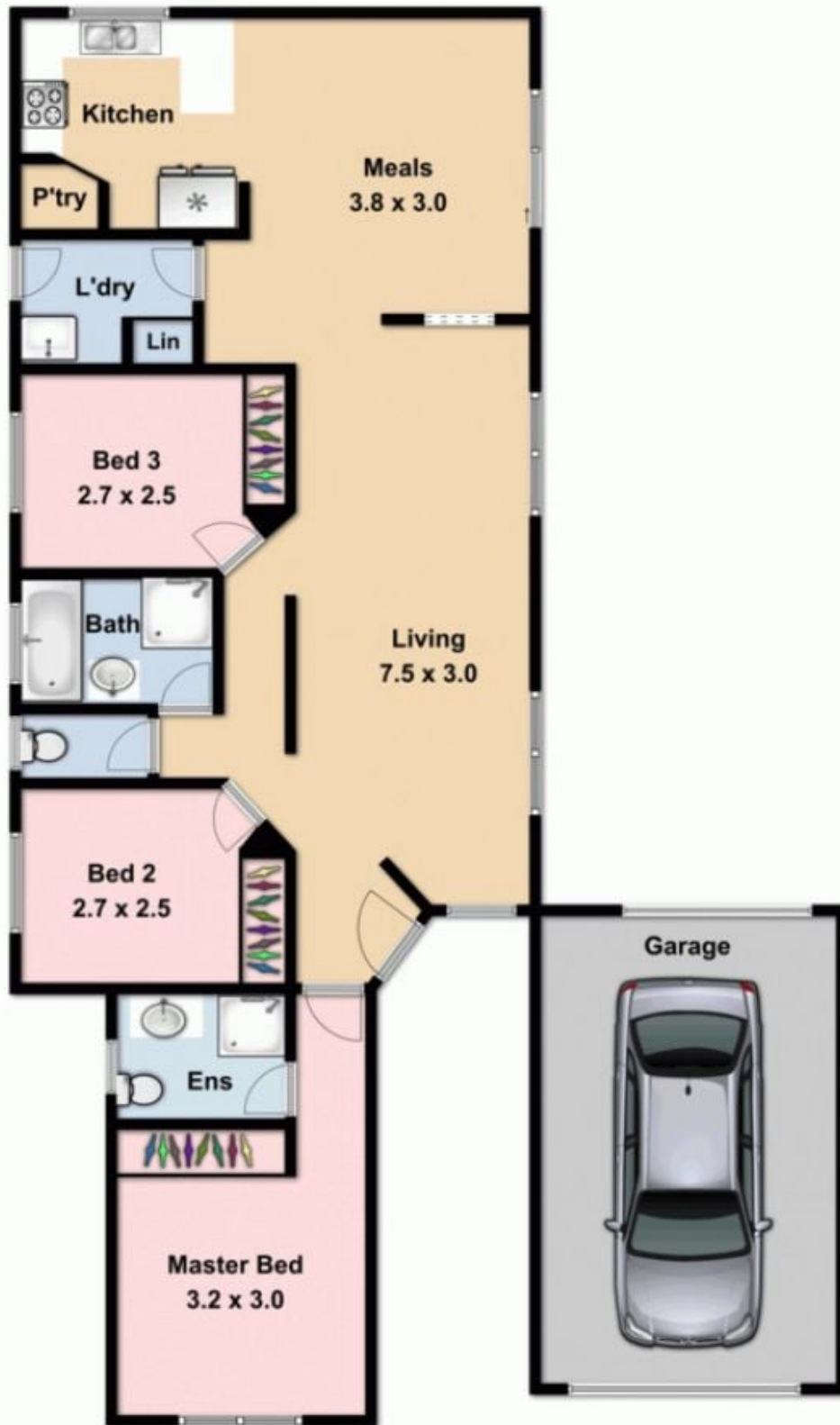
- 3 bedrooms with built in robes - master complete with ensuite
- Central bathroom with separate toilet
- Kitchen overlooking dining
- Kitchen complete with oven and gas cooktop
- Light filled living area
- Laundry with outside access

**Land Size** : 360 sqm

**View** : <https://www.ypa.com.au/7388571>



**Lisa Totaro**  
0410 144 215



Whilst [bwrn.com.au](http://bwrn.com.au) has made every attempt to ensure the accuracy of the floor plan contained here, measurements are approximate and no responsibility is taken for any error, omission, or mis-statement. This plan is for illustrative purposes only.



**90 Sorbonne Drive**

**Sunbury**