



1/216 Elizabeth Drive SUNBURY VIC

3 2 1

Situated in a prime location, this front facing townhouse is positioned for convenience. With easy access to Sunbury township, train station, public transport, sporting facilities as well as both primary and secondary schools, you'll find the location is hard to beat. Providing a low-maintenance lifestyle this impressive and totally captivating home is a must see for all investors, first home buyers or retirees.

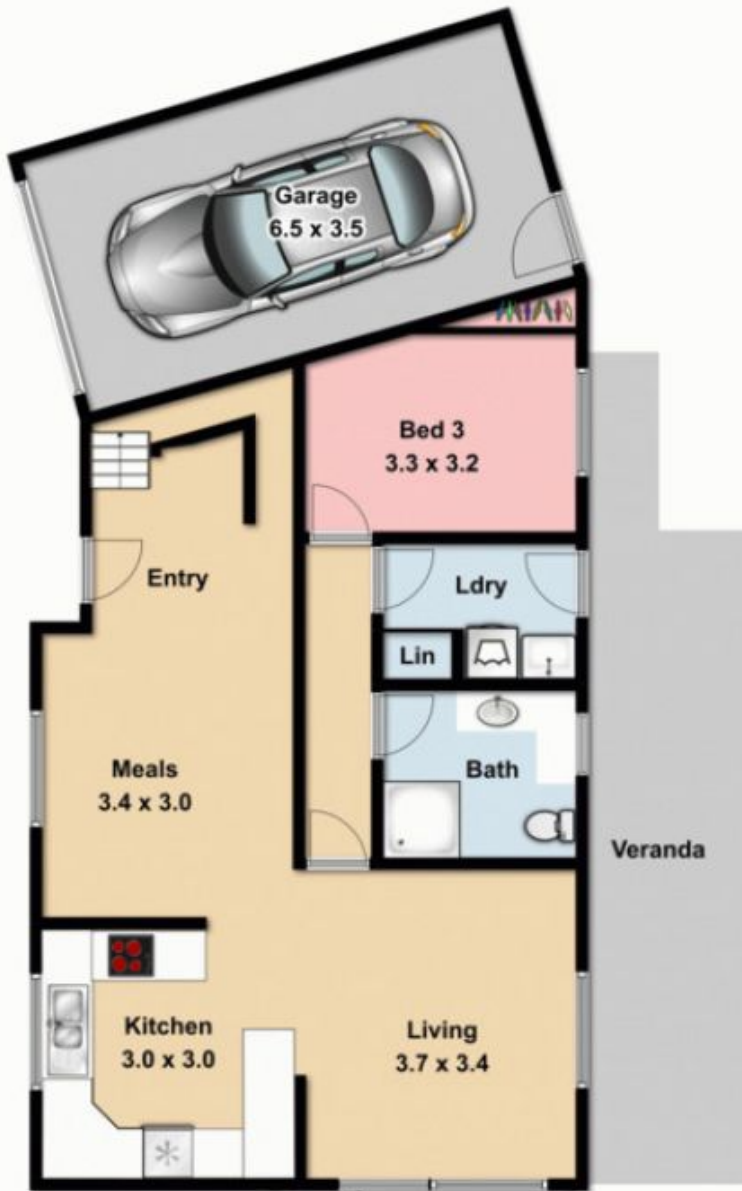
Property Features Include:

- 3 Bedrooms with built in robes
- Large master complete with walk in robe & full ensuite
- Central bathroom
- Generous kitchen with adjacent lounge and dining
- Upstairs landing perfect for sitting area or study
- Laundry with outside access
- Gas heating
- Evaporative cooling
- Established, low maintenance gardens

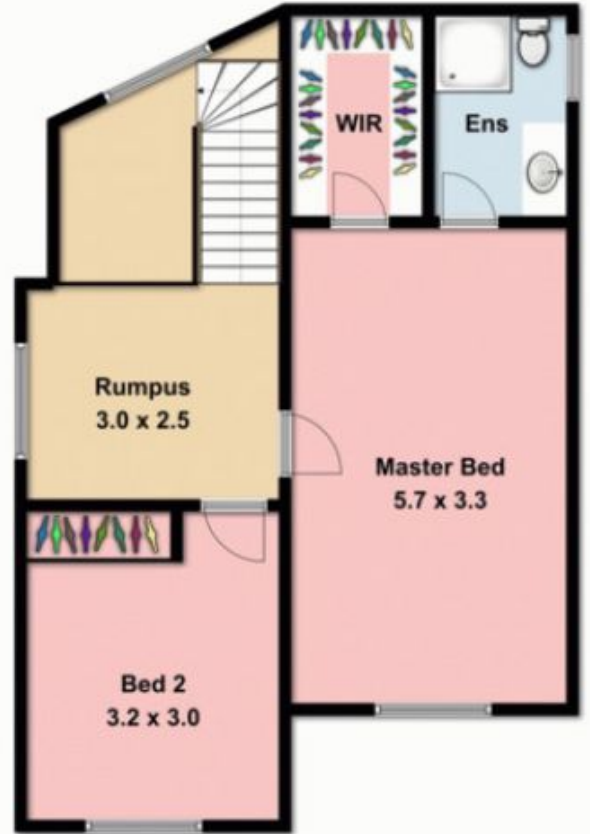
View : <https://www.ypa.com.au/7388496>



Lisa Totaro
0410 144 215



Ground Floor



First Floor

Whilst bwrn.com.au has made every attempt to ensure the accuracy of the floor plan contained here, measurements are approximate and no responsibility is taken for any error, omission, or mis-statement. This plan is for illustrative purposes only.



1/216 Elizabeth Drive

Sunbury