



6 Landsborough Drive SUNBURY VIC

3 1 1

Neatly positioned in a desirable location, this brick veneer home offers great value for money. Set on a generous block of 672m² approx. sits a fantastic opportunity for any sharp-witted investors looking to add to their portfolio, developer looking to subdivide (S.T.C.A.), first home buyers or even perfect for the young family. A few minutes from Sunbury township, within a short distance walk to Aldi/Terrace Shopping Centre, schools and bus - this property will be sure to generate plenty of interest.

Features include:

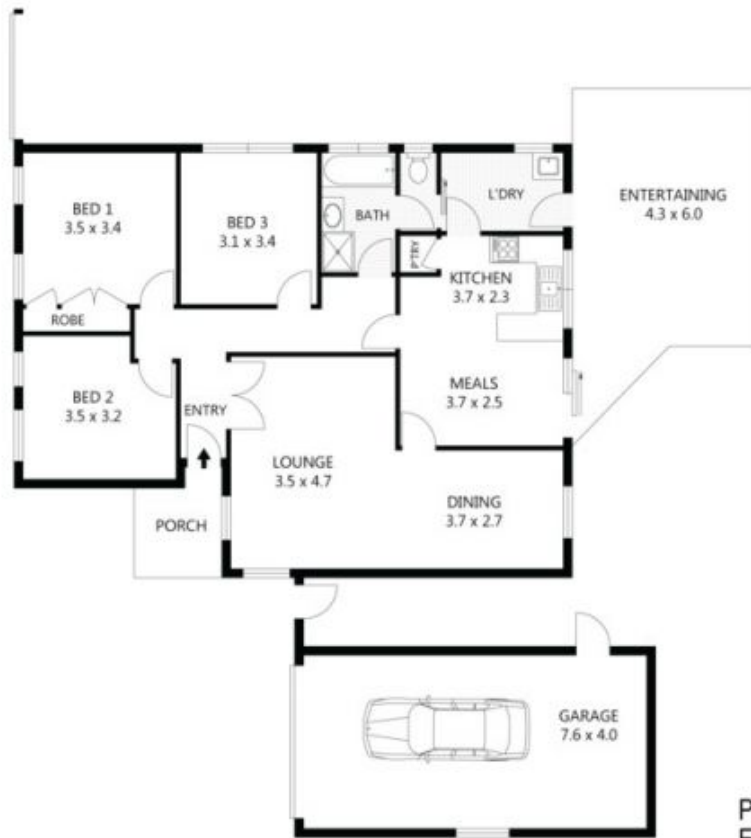
- 3 bedrooms 2 with BIRs
- Central bathroom
- Spacious open living area
- Kitchen is complete with generous adjoining dining
- Laundry with outside access
- Ducted heating
- Air conditioner

Land Size : 672 sqm

View : <https://www.ypa.com.au/7388385>



Lisa Totaro
0410 144 215



PORCH	-	4m ²
ENTERTAINING	-	26m ²
GARAGE	-	30m ²
RESIDENCE	-	102m ²



6 Landsborough Drive, Sunbury