



## 31 Mission Drive Aintree VIC

4 2 2

Affordable opportunity, Immaculately maintained, presented to perfection and not to mention the fantastic location with all amenities nearby including Bacchus Marsh Grammer School, Woodlea Town Centre, public transport, western highway and walking tracks/reserves/park lands at your fingertips. We are proud to present this property that offers the perfect combination of practicality and comfort nestled in a highly respected Woodlea Estate and is nothing short of outstanding.

### Features Include:

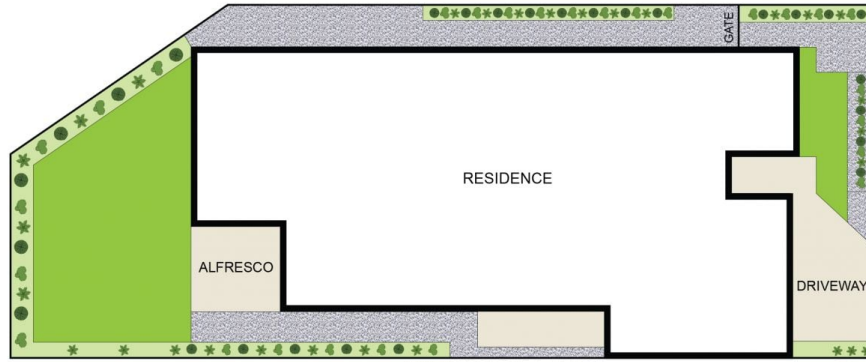
- ? Master bedroom showcasing a walk-in wardrobe and ensuite with quality fittings
- ? Additional three spacious bedrooms with built-in wardrobes
- ? Front formal lounge
- ? The open plan kitchen is located perfectly to incorporate

**Land Size** : 403 sqm

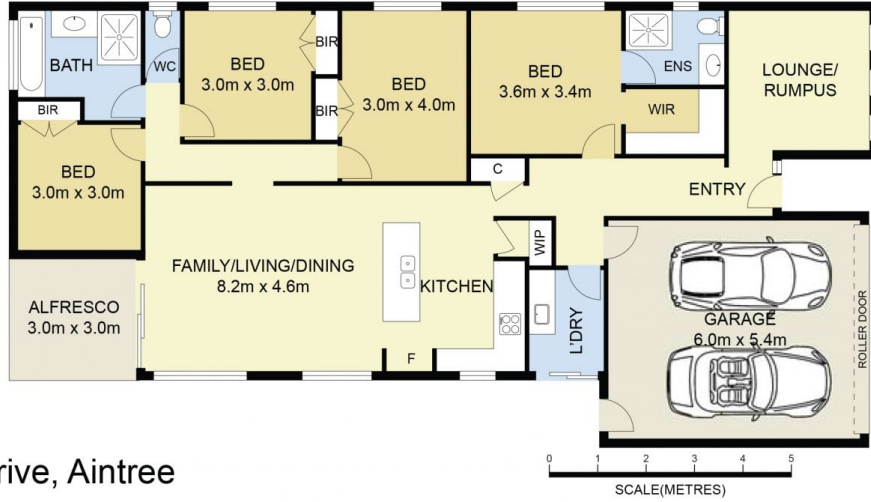
**View** : <https://www.ypa.com.au/7387428>



**Ashleigh Mcphan**  
0416 079 698



SITE PLAN  
(NOT TO SCALE)



## 31 Mission Drive, Aintree

DISCLAIMER : ALL DIMENSIONS ARE AN APPROXIMATION ONLY AND NO GUARANTEE IS GIVEN WITH RESPECT TO ACCURACY.