



19 Solstice Drive Fraser Rise VIC

4 2 2

On offer is this state of the art residence in the heart of Fraser Rise. Having been featured in the "Best Homes and Build Homes Magazines" this one of a kind custom built home exceeds all benchmarks of luxury living.

Featuring unobstructed north-east views of Infinity Park and the Stony Hill creek line you'll instantly experience a sense of tranquillity at your doorstep. Walking into the grand entrance you'll immediately be please as no expense has been spared with high-end finishes and stunning presentation with the polished concrete floors throughout and vaulted high ceilings.

On the ground floor you're immediately greeted with the formal study with views adjacent to the parklands and an oversized front formal lounge made for entertaining family and friends with the custom pressed metal gas log fireplace

Price : \$ 891,000

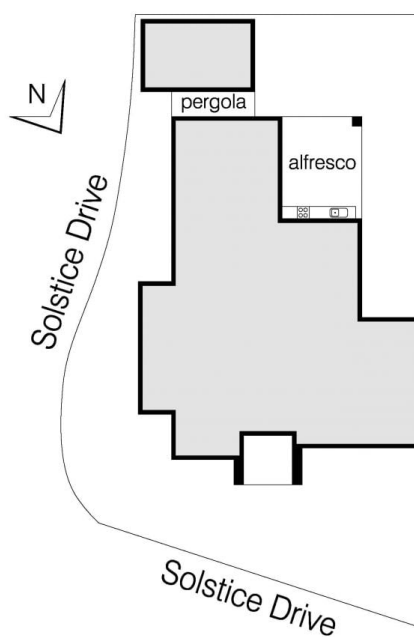
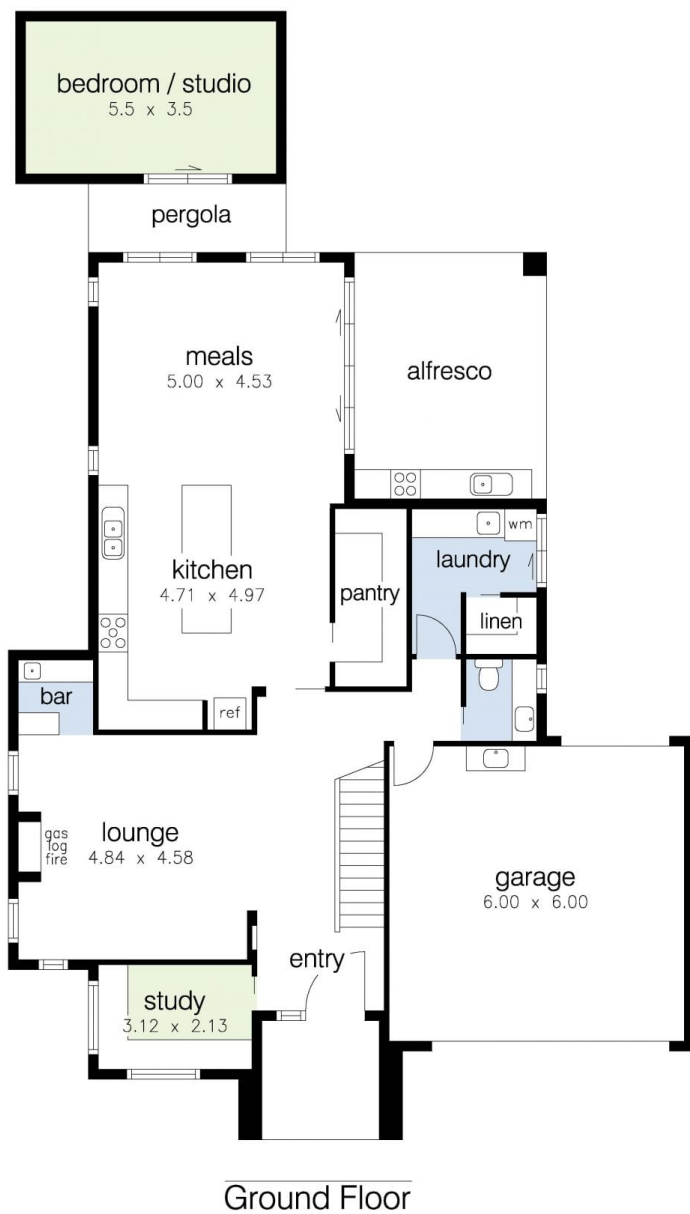
View : <https://www.ypa.com.au/7387350>



Joel Rawle
0416 165 473



Stephen Azzopardi
0402 012 554



19 Solstice Drive, Fraser Rise

DISCLAIMER: All stated dimensions are approximate only. Particulars given are for general information only and do not constitute any representation on the part of the vendor or agent/agency.