



## 23 Manny Paul Circuit Burnside Heights VIC

3  2  2 

Built with pride and showcasing a level of craftsmanship that is rarely found and offered, this fully equipped family haven delivers everything that a growing family could want and desire in a home. Nestled in the prestigious zone of Kororoit Creek Primary School and only moments away from public transport, gorgeous park lands, jogging track, quality secondary schools, Caroline Springs Town Centre, Watervale shopping centre and nearby train stations. Grasp this great opportunity to enter into the fast-growing market of Burnside Heights

### Features Include:

- ? Master bedroom showcases a walk-in wardrobe and ensuite with quality fittings
- ? Additional two spacious bedrooms with built in wardrobes
- ? Central bathroom with bathtub and shower
- ? Open plan kitchen is located perfectly to incorporate the

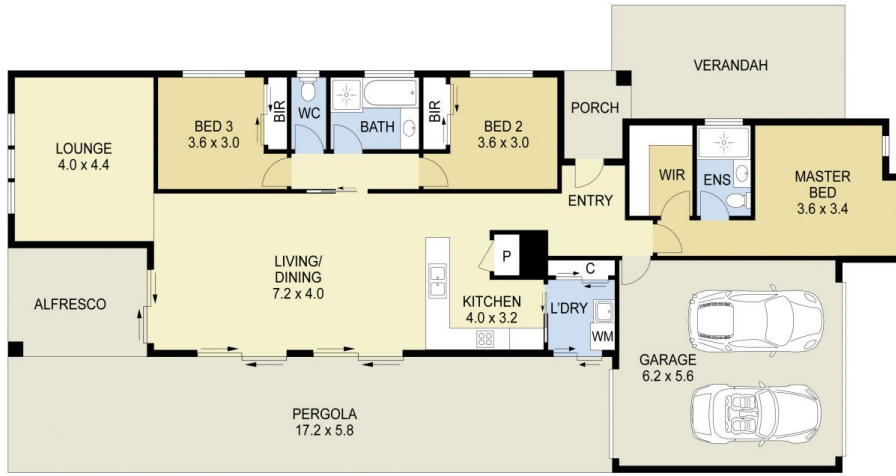
**Price** : \$ 745,000  
**Land Size** : 464 sqm  
**View** : <https://www.ypa.com.au/7387244>



**Andrew Migliorisi**  
0432 526 844



**Zen Christofi**  
0414 345 878



SITE PLAN  
(NOT TO SCALE)



TOTAL LAND SIZE: 464m<sup>2</sup>