

## 5 Tudor Rose Crescent Sydenham VIC

4 2 3

Positioned in arguably one of Sydenham's most prominent and in-demand locations is this large family home that is certain to tick all your boxes. Boasting a peaceful location with ample off-street parking creates the perfect harmony of what's to come once you step inside. Upon entry, the home features stunning tiles which flows through to the expansive open-plan design and carries through to the staircase creating a lovely focal point that sits proudly once you enter. Comprising of four great size bedrooms all with fitted built in robes, master with full ensuite (renovated) W.I.R and retreat, downstairs study or optional 5th bedroom, powder room, bright central bathroom, three separate large living zones, hostess kitchen with stainless steel appliances adjoining to a large family/meal's areas, separate upstairs retreat and so much more. Extras include gas ducted heating, evaporative cooling, electric rollers shutters, Bosch 18 x panel solar system, garden shed,

**Price** : \$ 863,000

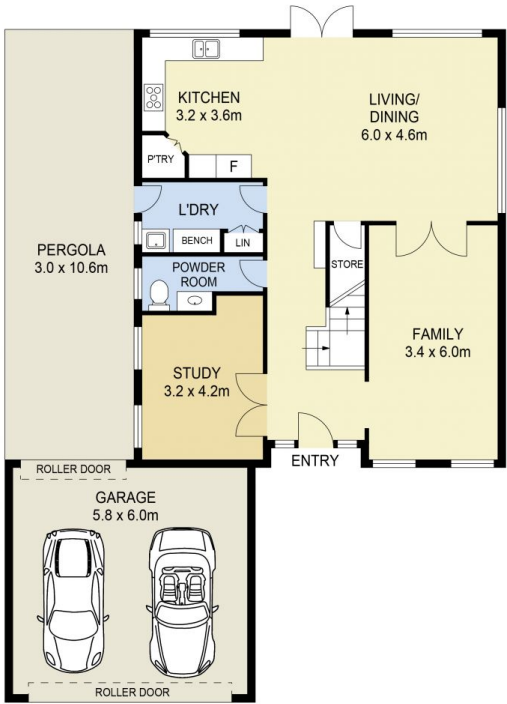
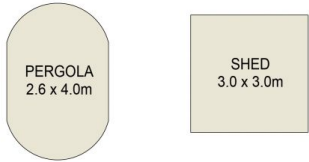
**View** : <https://www.ypa.com.au/7387199>



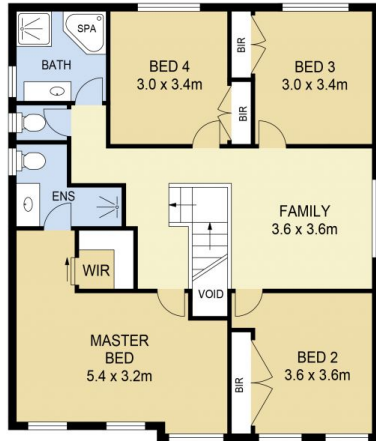
**Joel Rawle**  
0416 165 473



**Stephen Azzopardi**  
0402 012 554



GROUND FLOOR



FIRST FLOOR



SITE PLAN  
(NOT TO SCALE)

# 5 Tudor Rose Crescent, Sydenham



**DISCLAIMER :** ALL DIMENSIONS ARE AN APPROXIMATION ONLY AND NO GUARANTEE IS GIVEN WITH RESPECT TO ACCURACY.