



25 Clemenston Drive Caroline Springs VIC

4 2 2

Proudly standing in one of Caroline Springs' most popular and central Estate's, this great family home has no wasted space, promotes simple living & will instantly impress any family, first home buyer, investor or someone looking to downsize. The perfectly positioned location made for convenient living being located within walking distance to Lake Caroline, Caroline Springs Shopping Centre, quality primary and secondary schools, child care, public transport and so much more - It is clear to see why all families dream of purchasing in this location.

Features Include:

- ? Master bedroom showcasing a walk-in wardrobe and ensuite with quality fittings
- ? Additional three spacious bedrooms all with built-in wardrobes
- ? Front formal lounge

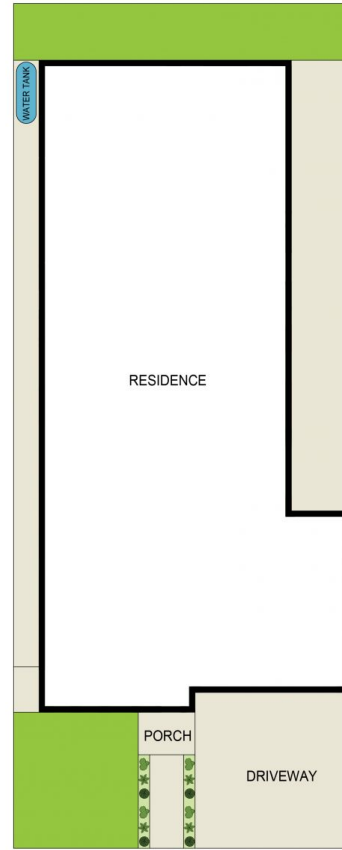
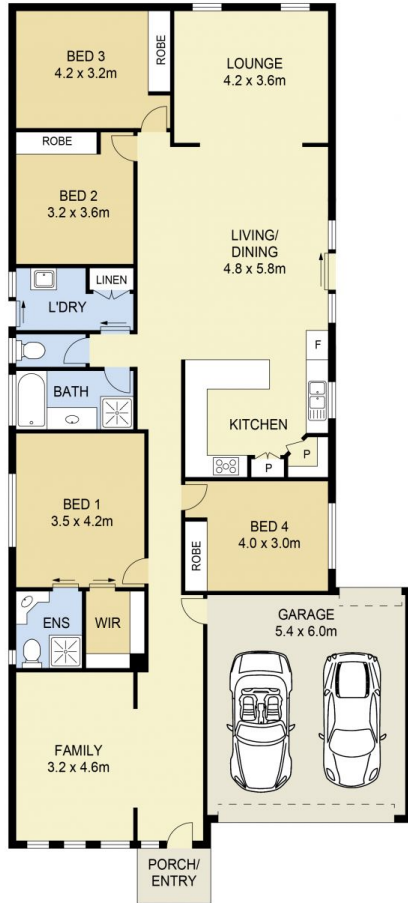
Price : \$ 720,000
Land Size : 400 sqm
View : <https://www.ypa.com.au/7387185>



Andrew Migliorisi
0432 526 844



Stephen Azzopardi
0402 012 554



SITE PLAN
(NOT TO SCALE)

25 Clementson Drive, Caroline Springs



DISCLAIMER : ALL DIMENSIONS ARE AN APPROXIMATION ONLY AND NO GUARANTEE IS GIVEN WITH RESPECT TO ACCURACY.