



22 Hovell Drive Burnside Heights VIC

4 2 2

Nestled in the most sought-after suburb of Burnside Heights presents this perfect opportunity for one lucky buyer. Zoned for Kororoit Creek Primary School and located only moments away from public transport, gorgeous parklands, jogging track, quality secondary schools, Caroline Springs Town Centre, Watervale Shopping Centre and nearby train station. Grasp this great opportunity to enter into the fast-growing market of Burnside Heights.

This well-presented and well-maintained home offers 4 bedrooms, a master with walk-in robe & ensuite, other 3 bedrooms with build in robes, large lounge room and walking through the home you'll notice the spacious open plan living to incorporate the meals, kitchen & family domain, central bathroom, large laundry, remote-controlled double car garage with external and internal access, and

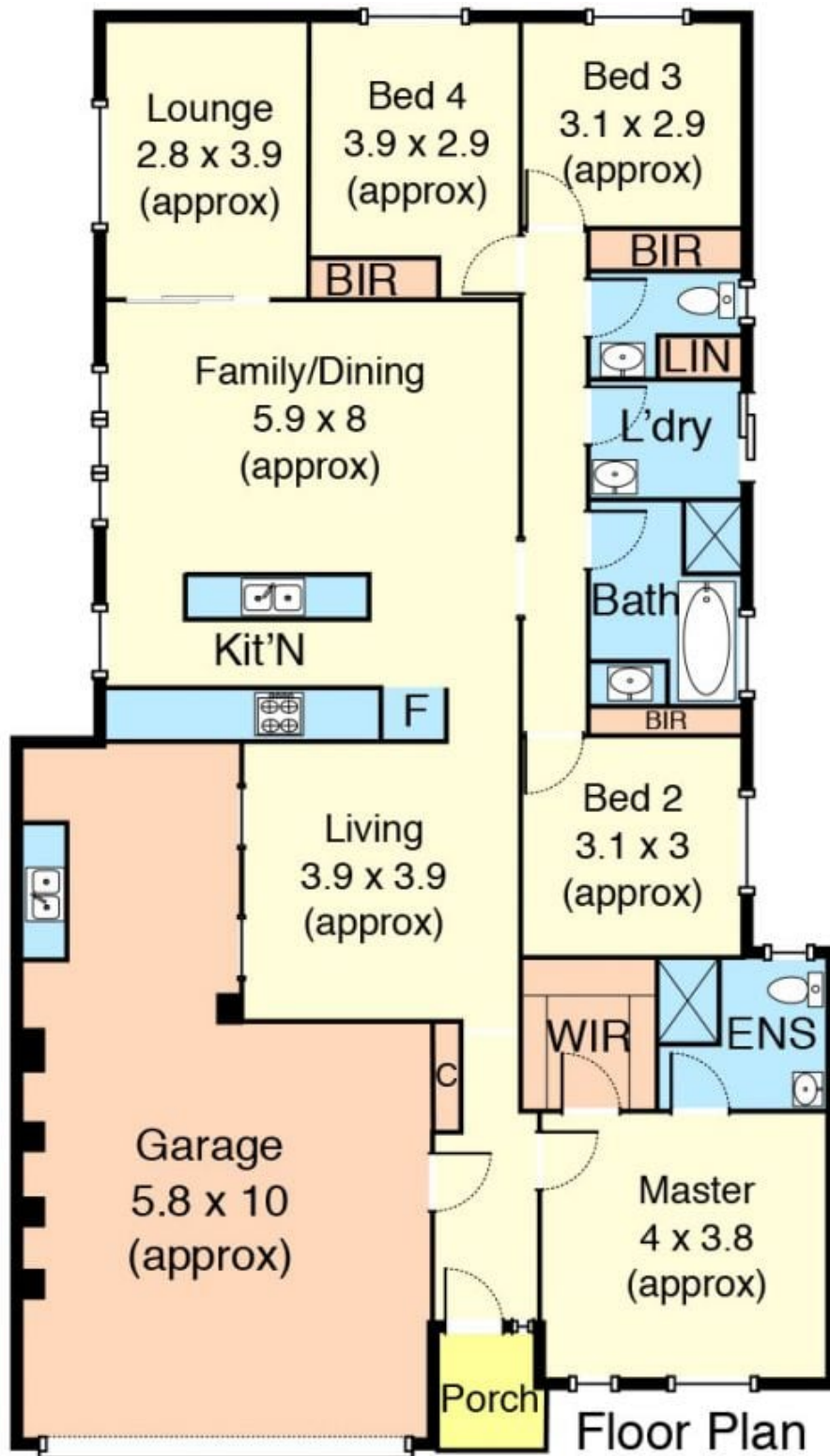
Price : \$ 740,000
Land Size : 456 sqm
View : <https://www.ypa.com.au/7387135>



Menka Zdraveska
03 9363 1455



Joel Rawle
0416 165 473



22 Hovell Drive Burnside Heights

*This floorplan is for illustration purposes only and no warranty is given to its accuracy. Purchasers are advised to carry out their own investigations.