



## 25/40 Mccubbin Way Caroline Springs VIC

3 1 2

Proudly standing in one of Caroline Springs' most popular estate is this well maintained home which has no wasted space, promotes simple living & will instantly impress any family, first home buyer, investor or retiree looking to downsize with its beautiful reserve facing views, {water ways }and walking tracks.

### Features Include:

- ? Master bedroom showcases a private balcony, walk-in wardrobe and a two way ensuite with quality fittings
- ? Additional two spacious bedrooms with built-in wardrobes
- ? Front formal lounge
- ? The kitchen is located perfectly to incorporate the meals and family area which leads out to an outdoor area allowing ample space for entertaining
- ? Kitchen complete with ample cupboard space, gas cooktop, dishwasher and double sink

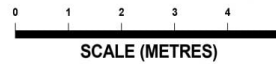
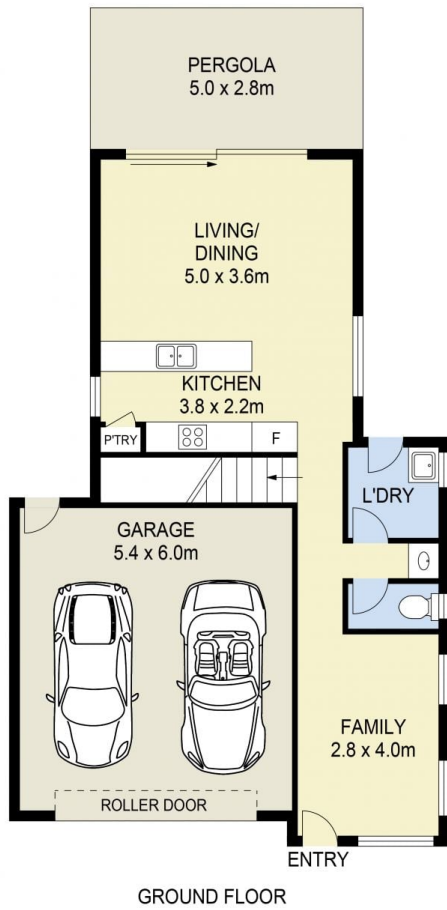
**Price** : \$ 565,000  
**Land Size** : 206 sqm  
**View** : <https://www.ypa.com.au/7387105>



**Andrew Migliorisi**  
0432 526 844



**Stephen Azzopardi**  
0402 012 554



25/40 McCubbin Way, Caroline Springs

DISCLAIMER : ALL DIMENSIONS ARE AN APPROXIMATION ONLY AND NO GUARANTEE IS GIVEN WITH RESPECT TO ACCURACY.