



## 39 Tora Crescent Fraser Rise VIC

4 2 2

When an opportunity like this comes along, there is no need to let it get away. Positioned conveniently within close proximity to gorgeous park lands, quality primary and secondary schools, local shops, multi-million dollar sporting precinct, nearby restaurants, transport facilities, newly built IGA and Caroline Springs Town Centre. This truly stunning property is the whole package offering multiple living areas ready for the entire family to enjoy.

### Features Include:

- ? Master bedroom showcases a ceiling fan, walk-in wardrobe and ensuite with quality fittings
- ? Additional three spacious bedrooms with built in wardrobes and ceiling fans (one bedroom with walk in wardrobe)
- ? Open plan kitchen is located perfectly to incorporate the meals and living space

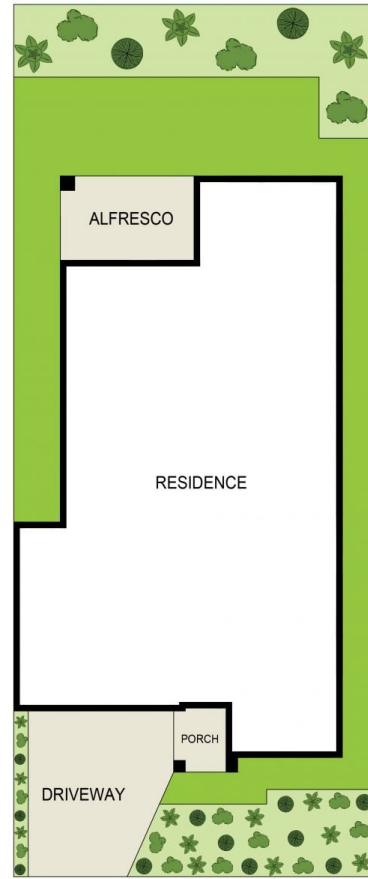
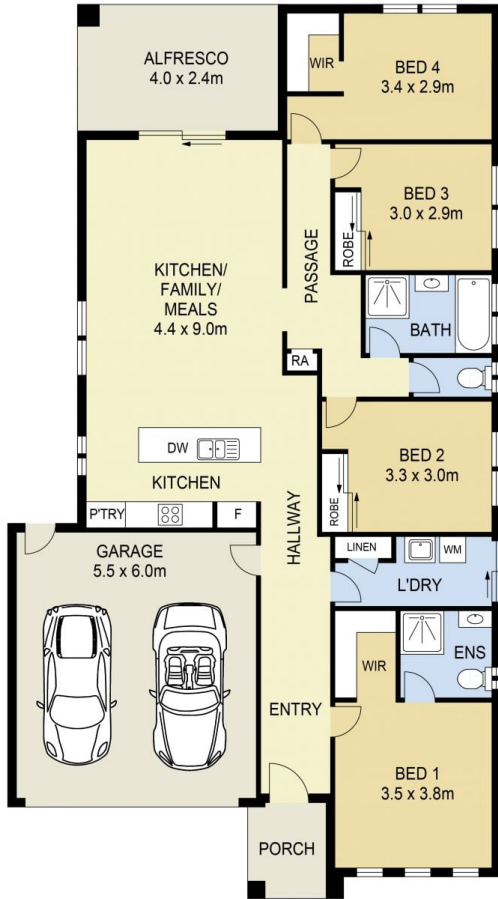
**Price** : \$ 660,000  
**Land Size** : 375 sqm  
**View** : <https://www.ypa.com.au/7387054>



**Andrew Migliorisi**  
0432 526 844



**Stephen Azzopardi**  
0402 012 554

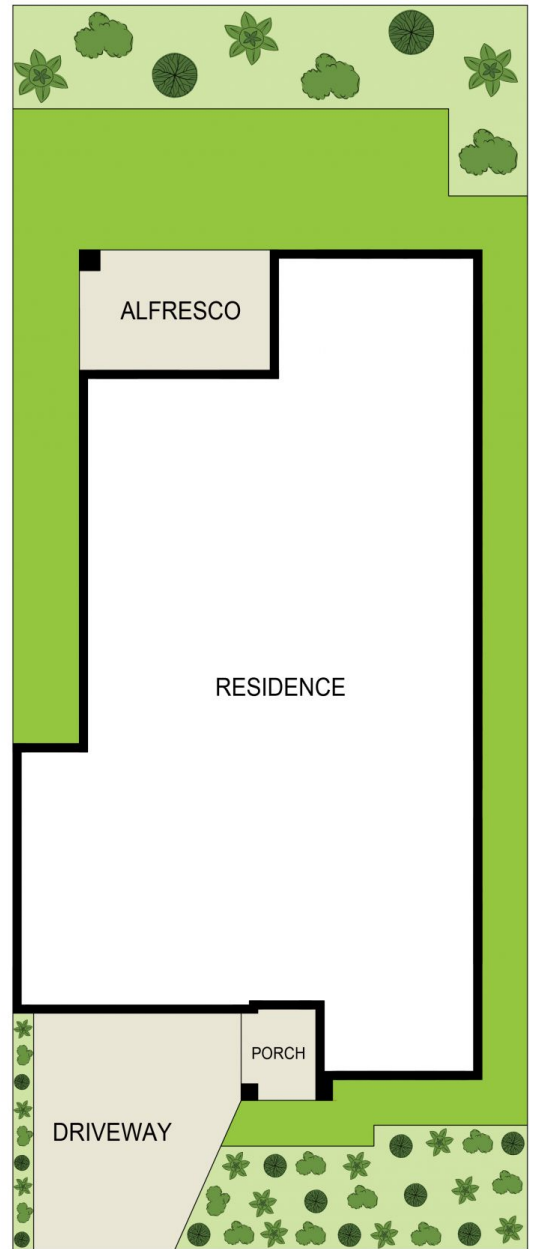
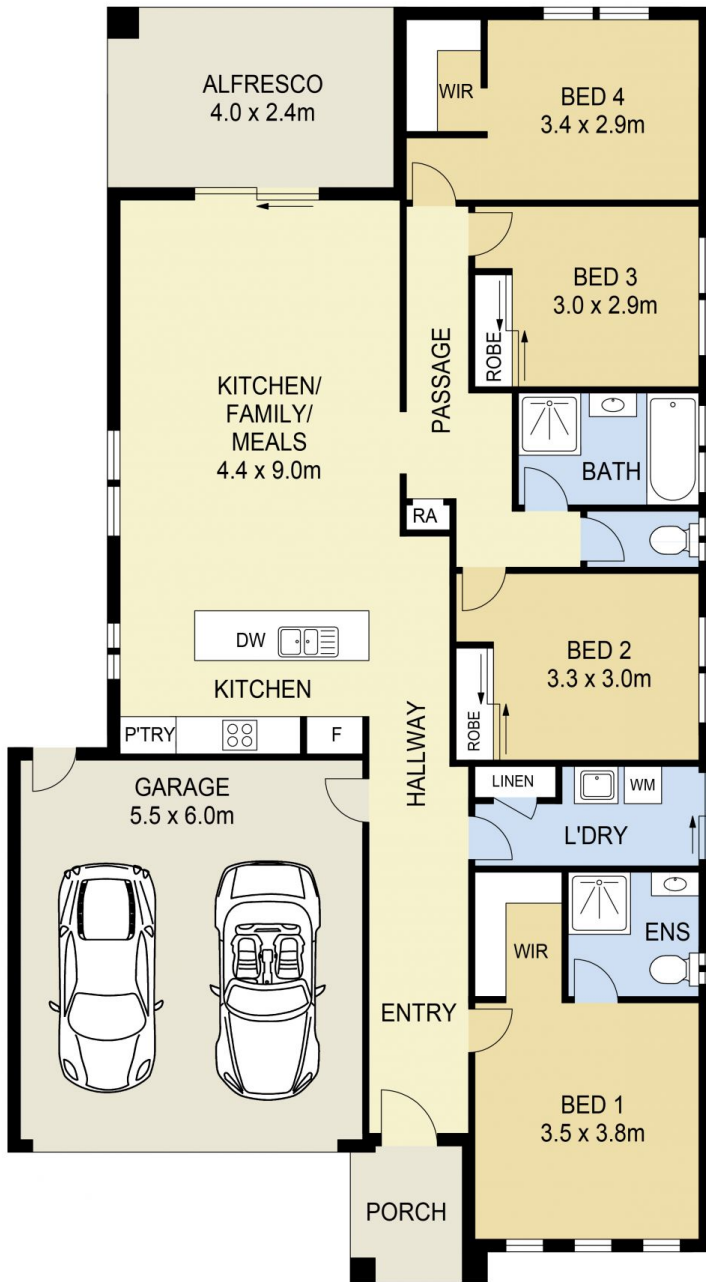


SITE PLAN  
(NOT TO SCALE)



### 39 Tora Crescent, Fraser Rise

**DISCLAIMER:** ALL DIMENSIONS ARE AN APPROXIMATION ONLY AND NO GUARANTEE IS GIVEN WITH RESPECT TO ACCURACY.



SITE PLAN  
(NOT TO SCALE)

## 39 Tora Crescent, Fraser Rise



DISCLAIMER : ALL DIMENSIONS ARE AN APPROXIMATION ONLY AND NO GUARANTEE IS GIVEN WITH RESPECT TO ACCURACY.