

8 Northampton Crescent Caroline Springs VIC

4  2  2 

When an opportunity like this comes along, there is no need to let it get away. Positioned conveniently within close proximity to gorgeous park lands, quality primary and secondary schools, local shops, public transport, Caroline Springs Town Centre, Caroline Springs train station and easy access to Western Highway. This truly stunning property is the whole package offering multiple living areas ready for the entire family to enjoy.

Features Include:

- ? Master bedroom showcasing a walk-in wardrobe and ensuite with quality fittings
- ? Additional three spacious bedrooms with built in robes
- ? Front formal lounge
- ? The kitchen is located perfectly to incorporate the large meals and family space leading out to a beautifully built pergola area allowing ample space for entertaining all year

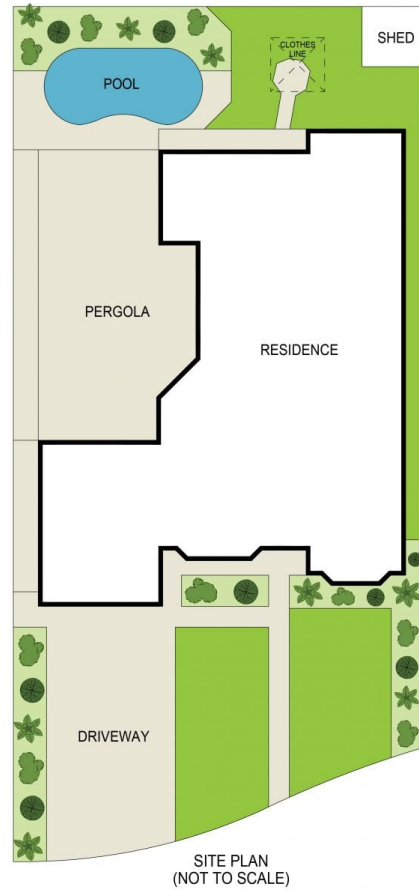
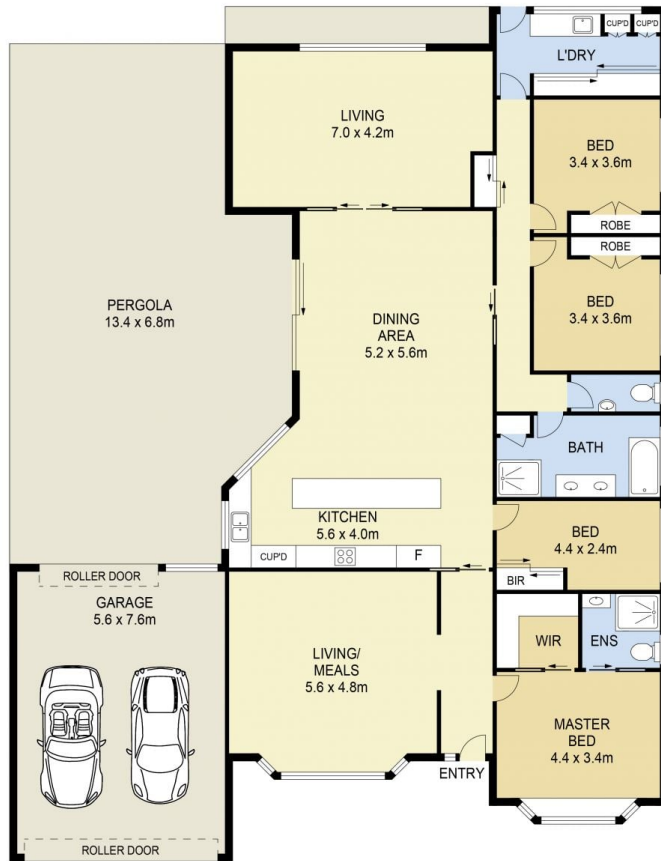
Price : \$ 820,000
Land Size : 710 sqm
View : <https://www.ypa.com.au/7386999>



Andrew Migliorisi
0432 526 844



Stephen Azzopardi
0402 012 554



8 Northampton Crescent, Caroline Springs



DISCLAIMER : ALL DIMENSIONS ARE AN APPROXIMATION ONLY AND NO GUARANTEE IS GIVEN WITH RESPECT TO ACCURACY.