



20 Wills Terrace Burnside Heights VIC

3  2  2 

Built with pride and showcasing a level of craftsmanship that is rarely found and offered, this fully equipped family haven delivers everything that a growing family could want and desire in a home. Nestled in the prestigious zone of Kororoit Creek Primary School and only moments away from public transport, gorgeous park lands, jogging track, quality secondary schools, Caroline Springs Town Centre, Watervale shopping center and nearby train stations. Grasp this great opportunity to enter into the fast-growing market of Burnside Heights

Features Include:

- ? Master bedroom showcases a walk-in wardrobe and ensuite
- ? Additional two spacious bedrooms with built in wardrobes

- ? Central bathroom with bathtub and shower

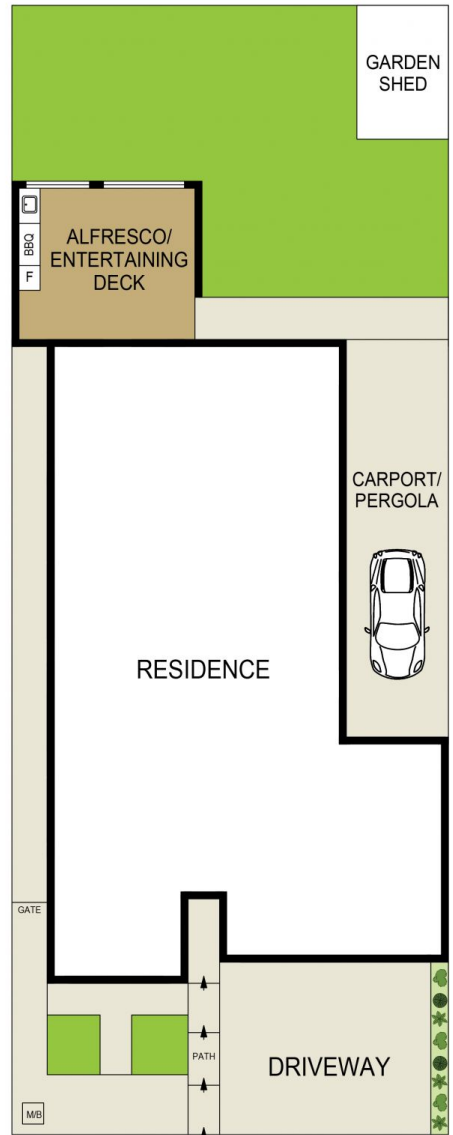
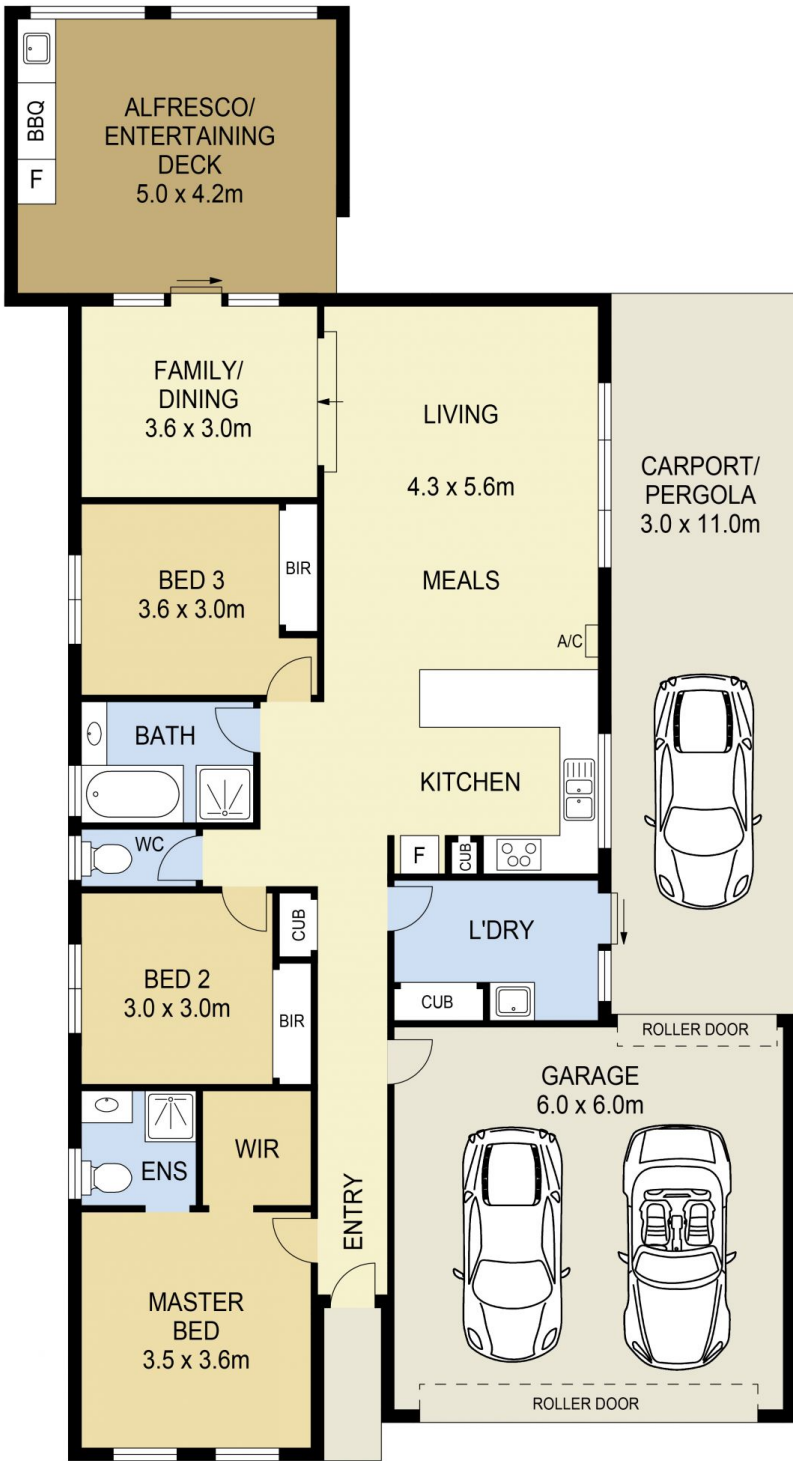
Price : \$ 646,200
Land Size : 389 sqm
View : <https://www.ypa.com.au/7386978>



Andrew Migliorisi
0432 526 844

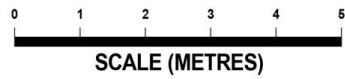


Stephen Azzopardi
0402 012 554



SITE PLAN (NOT TO SCALE)

20 Wills Terrace, Burnside Heights



DISCLAIMER : ALL DIMENSIONS ARE AN APPROXIMATION ONLY AND NO GUARANTEE IS GIVEN WITH RESPECT TO ACCURACY.