

6 Daymar Court Hillside VIC

5 🛏 2 🚿 3 🚗

Polished to perfection this immaculate well-maintained home has warmth, character and is ideally nestled in the one of the most popular pockets of Hillside in the Banchory Grove estate. Located near parks, Cana Primary School, Hillside shops, Café's, close proximity to Watergardens shopping Centre, Sydenham train station, buses & easy access to Melton highway.

This astonishing family home hits all the high notes for you and your growing family and is built to last a lifetime. You will fall in love with the space this home offers, with four bedrooms all with robes, master bedroom with large ensuite including double vanity, shower & spa, separate toilet and central bathroom. Ground floor has a large bedroom that can be used as a bedroom or office, large lounge room, large kitchen overlooking meals & family area plus separate rumpus room. Extra features include three

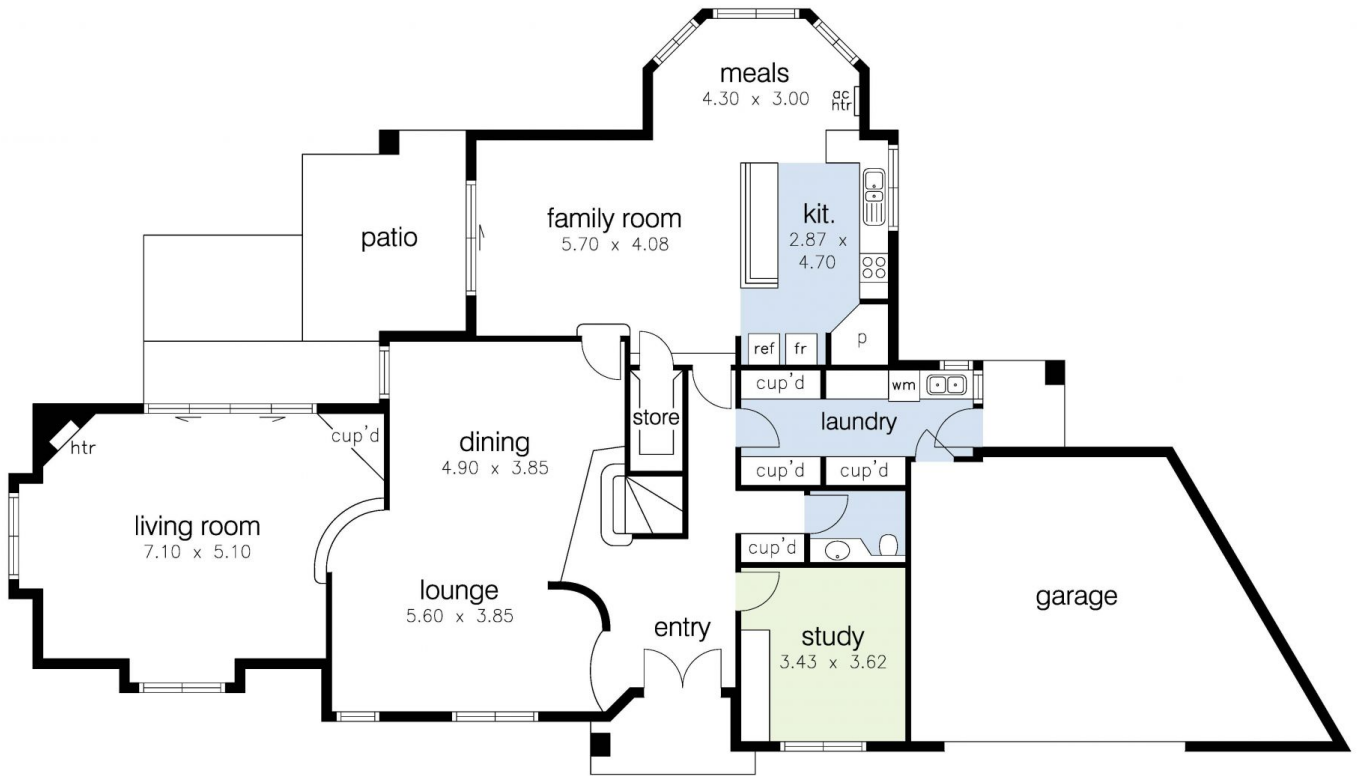
Price : \$ 840,000
Building Size : 35 sqm
Land Size : 556 sqm
View : <https://www.ypa.com.au/7386964>



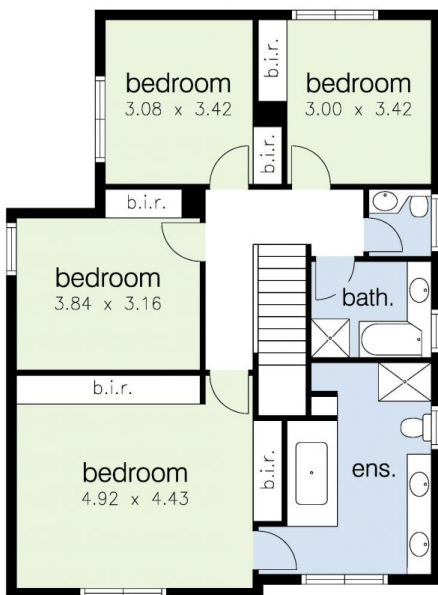
Menka Zdraveska
03 9363 1455



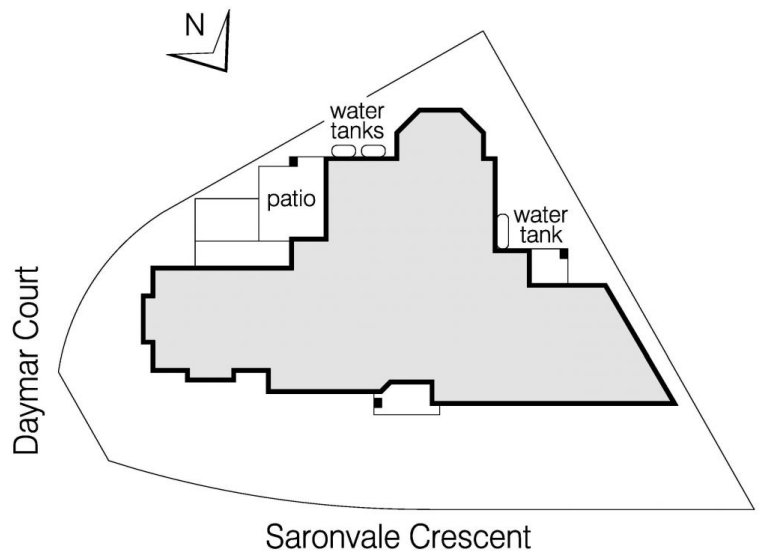
Joel Rawle
0416 165 473



Ground Floor



First Floor



6 Daymar Court, Hillside