



8 Etheridge Rise Caroline Springs VIC

3 2 2

This architecturally family domain will be at the top of your dreams list! Behind an appealing facade and situated in a beautiful street on a block of 607m² (approx.), this home surely hits all the high notes for you and your growing family! Built to last a lifetime there is something for a family of all ages to enjoy, you will fall in love with the space this home offers, with 40 squares under the roof line, enjoy multiple living zones and incredible outdoor spaces for entertaining all year round.

Features Include:

- ? Master bedroom showcasing a huge walk-in wardrobe and ensuite with double vanity, 40mm stone bench top and quality fittings which also steps out onto your very own balcony
- ? Additional two spacious bedrooms with built in robes
- ? Home office, kids retreat or fourth bedroom

Price : \$ 985,000
Land Size : 607 sqm
View : <https://www.ypa.com.au/7386953>



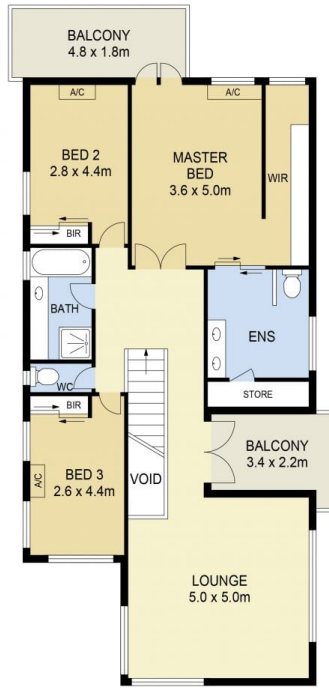
Andrew Migliorisi
0432 526 844



Stephen Azzopardi
0402 012 554



GROUND FLOOR

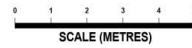


FIRST FLOOR



SITE PLAN
(NOT TO SCALE)

8 Etheridge Rise, Caroline Springs



DISCLAIMER : ALL DIMENSIONS ARE AN APPROXIMATION ONLY AND NO GUARANTEE IS GIVEN WITH RESPECT TO ACCURACY.