



55 Timele Drive Hillside VIC

3  2  2 

From the moment you walk through the front door you will instantly be impressed with the high-quality standard and immaculate presentation of this family home. Offering an exceptional lifestyle with generous spaces for entertaining and relaxing with the whole family.

Price : \$ 684,000
Land Size : 498 sqm
View : <https://www.ypa.com.au/7386935>

Features Include:

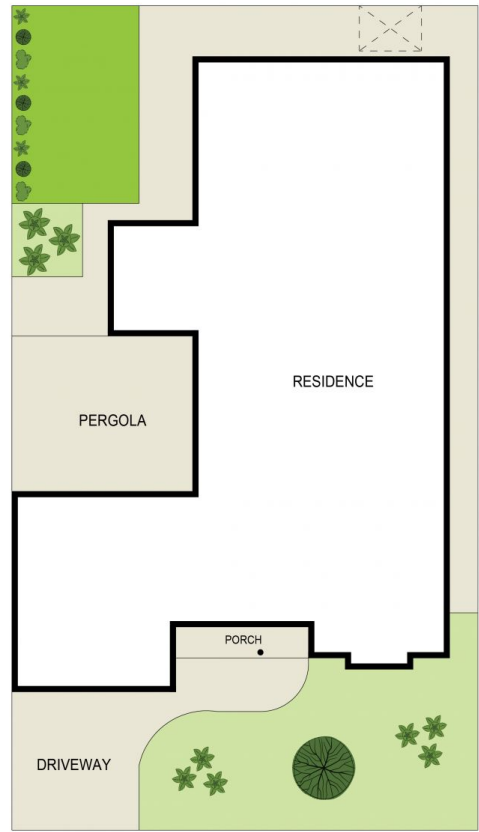
- ? Master bedroom showcasing a walk-in wardrobe, ensuite with double vanity and quality fittings
- ? Additional two spacious bedrooms both with built in wardrobes
- ? Home office or fourth bedroom
- ? Separate formal lounge
- ? Open plan kitchen is located perfectly to incorporate the large meals and living space
- ? Kitchen complete with ample cupboard space, first class stainless steel appliances including gas cook top, range



Andrew Migliorisi
0432 526 844

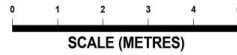


Stephen Azzopardi
0402 012 554



SITE PLAN
(NOT TO SCALE)

55 Timele Drive, Hillside



DISCLAIMER : ALL DIMENSIONS ARE AN APPROXIMATION ONLY AND NO GUARANTEE IS GIVEN WITH RESPECT TO ACCURACY.