

12 Hammersley Place Caroline Springs VIC

3 2 2

When an opportunity like this comes along, there is no need to let it get away. Positioned conveniently within close proximity to gorgeous park lands, quality primary and secondary schools, local shops, public transport, Caroline Springs Town Centre, Caroline Springs train station and easy access to Western Highway.

Features Include:

- ? Master bedroom showcases a built in wardrobe and ensuite
- ? Additional two spacious bedrooms both built in wardrobes
- ? Central bathroom with bathtub
- ? Separate front lounge room
- ? Kitchen is located perfectly to incorporate the meals and family area
- ? Kitchen complete with ample cupboard space, gas cook top, electric oven, range hood, double sink and dishwasher

Price : \$ 560,000

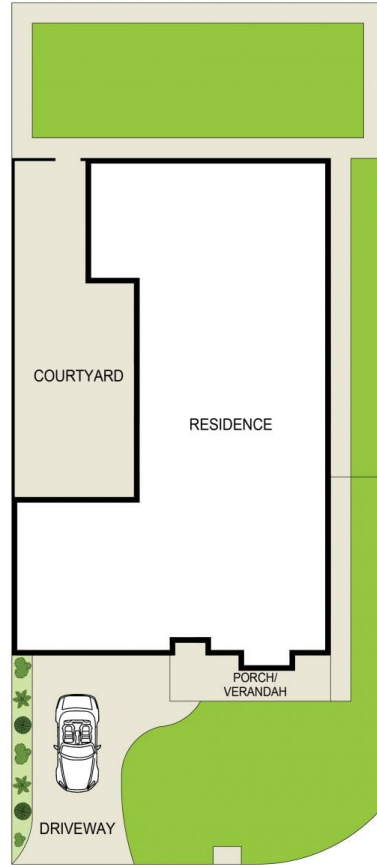
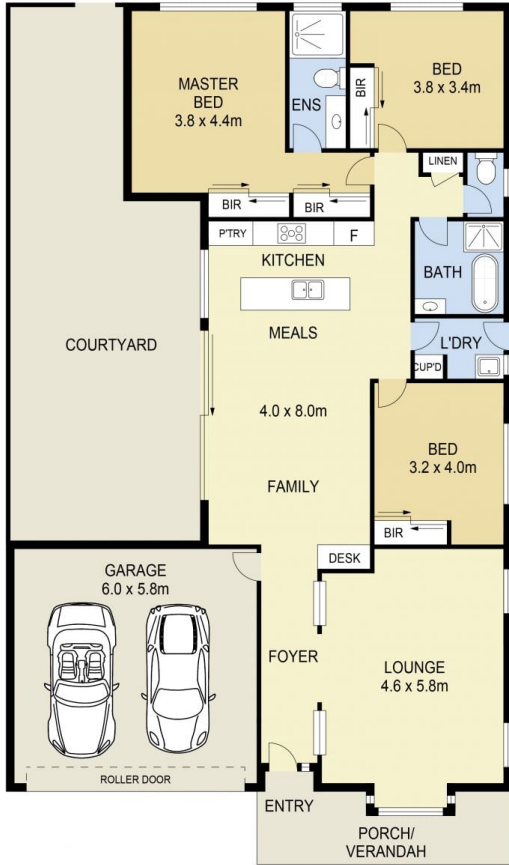
View : <https://www.ypa.com.au/7386932>



Andrew Migliorisi
0432 526 844



Stephen Azzopardi
0402 012 554



SITE PLAN
(NOT TO SCALE)



12 Hammersley Place, Caroline Springs

DISCLAIMER : ALL DIMENSIONS ARE AN APPROXIMATION ONLY AND NO GUARANTEE IS GIVEN WITH RESPECT TO ACCURACY.