



64 Kororoit Approach Caroline Springs VIC

3  2  2 

Tired of missing out on quality properties? Then make sure you're quick to see this one! Located in the highly desirable Point Estate, close to quality primary and secondary schools, sporting facilities, playgrounds, Kororoit creek, public transport and easy access to Caroline Springs Shopping centre. In an instant you'll fall in love with this gorgeous home with so much more to offer.

Features Include:

- ? Master bedroom showcasing a walk-in wardrobe, ensuite with double vanity and quality fittings
- ? Additional two spacious bedrooms both with built in wardrobes
- ? Home office or kids retreat
- ? Open plan kitchen is located perfectly to incorporate the large meals and living space which leads out to an alfresco area with timber decking

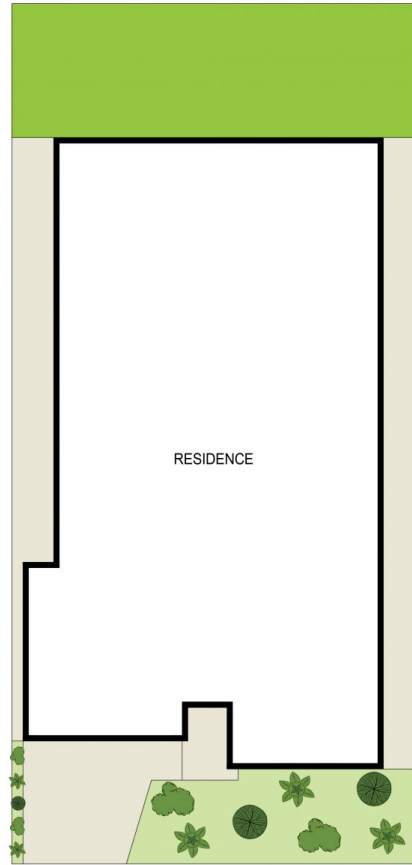
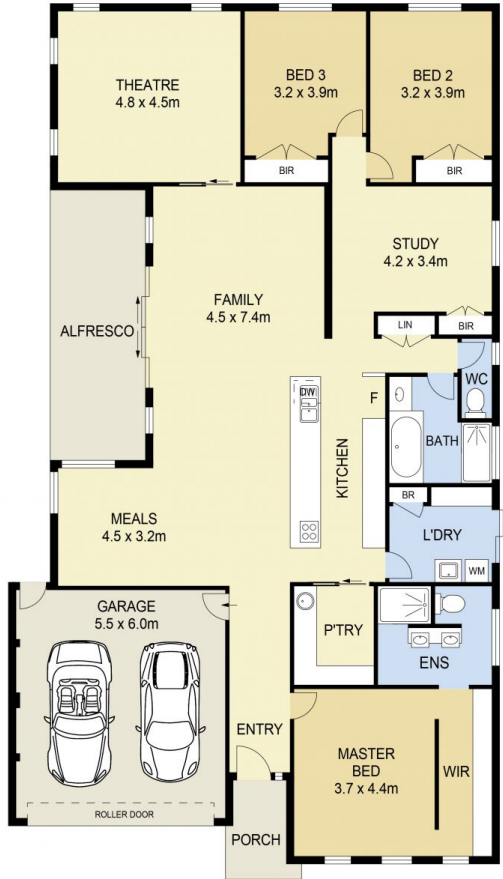
Price : \$ 700,000
Land Size : 455 sqm
View : <https://www.ypa.com.au/7386931>



Andrew Migliorisi
0432 526 844



Stephen Azzopardi
0402 012 554



SITE PLAN
(NOT TO SCALE)



64 Kororoit Approach, Caroline Springs

DISCLAIMER : ALL DIMENSIONS ARE AN APPROXIMATION ONLY AND NO GUARANTEE IS GIVEN WITH RESPECT TO ACCURACY.