



## 30 Rowling Street FRASER RISE VIC

3 2 2

When an opportunity like this comes along, there is no need to let it get away. Positioned conveniently within close proximity to gorgeous park lands, quality primary and secondary schools, local shops, multi-million dollar sporting precinct, nearby restaurants, transport facilities, nearby train station, newly built IGA and Caroline Springs Town Centre. This truly stunning property is the whole package offering multiple living areas ready for the entire family to enjoy.

### Features Include:

Master bedroom showcases a walk-in wardrobe and ensuite with quality fittings

Additional two spacious bedrooms with built in robes

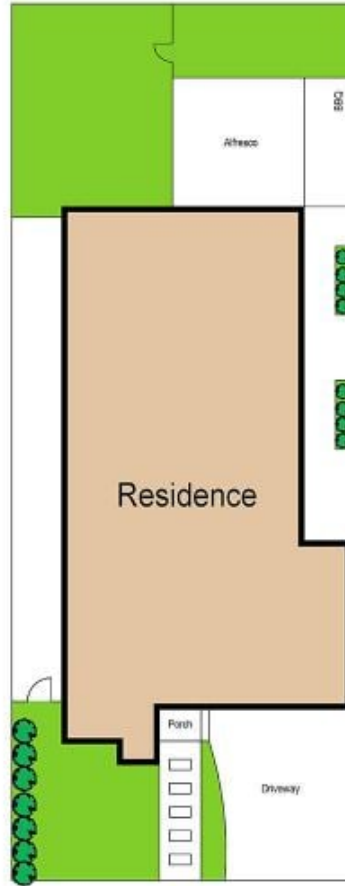
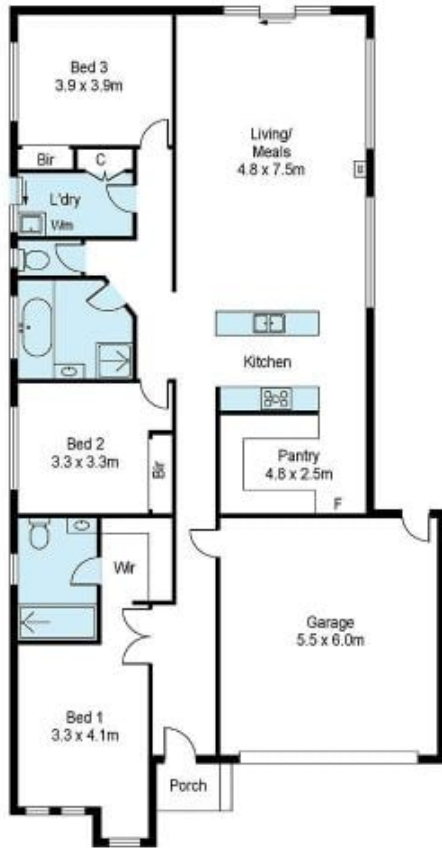
Open plan kitchen is located perfectly to incorporate the meals and living space which leads out to an outdoor alfresco area allowing ample space for entertaining

**Land Size** : 400 sqm

**View** : <https://www.ypa.com.au/7386793>



**Andrew Migliorisi**  
0432 526 844



Scale in metres indicative only. Dimensions are approximate. All information contained herein is gathered from sources we believe to be reliable. However we cannot guarantee its accuracy and interested persons should rely on their own enquiries.



30 Rowling Street, Fraser Rise