



43 Wyperfeld Circuit CAROLINE SPRINGS VIC

3  2  1 

Centrally located in the beautiful Caroline Springs is the home that you have been waiting for.

View : <https://www.ypa.com.au/7386605>

Comprising of three bedrooms all with built in robes, master bedroom complete with full en-suite and walk in robe. The immaculate kitchen which overlooks the dining and living area offers the perfect area for entertaining while the family/ meals area comprises of high cathedral ceilings added extras include, spacious laundry, heating, cooling, remote control garage with internal access and so much more. Moving outside you are greeted with an outdoor pergola area allowing the perfect space for all year round entertaining.

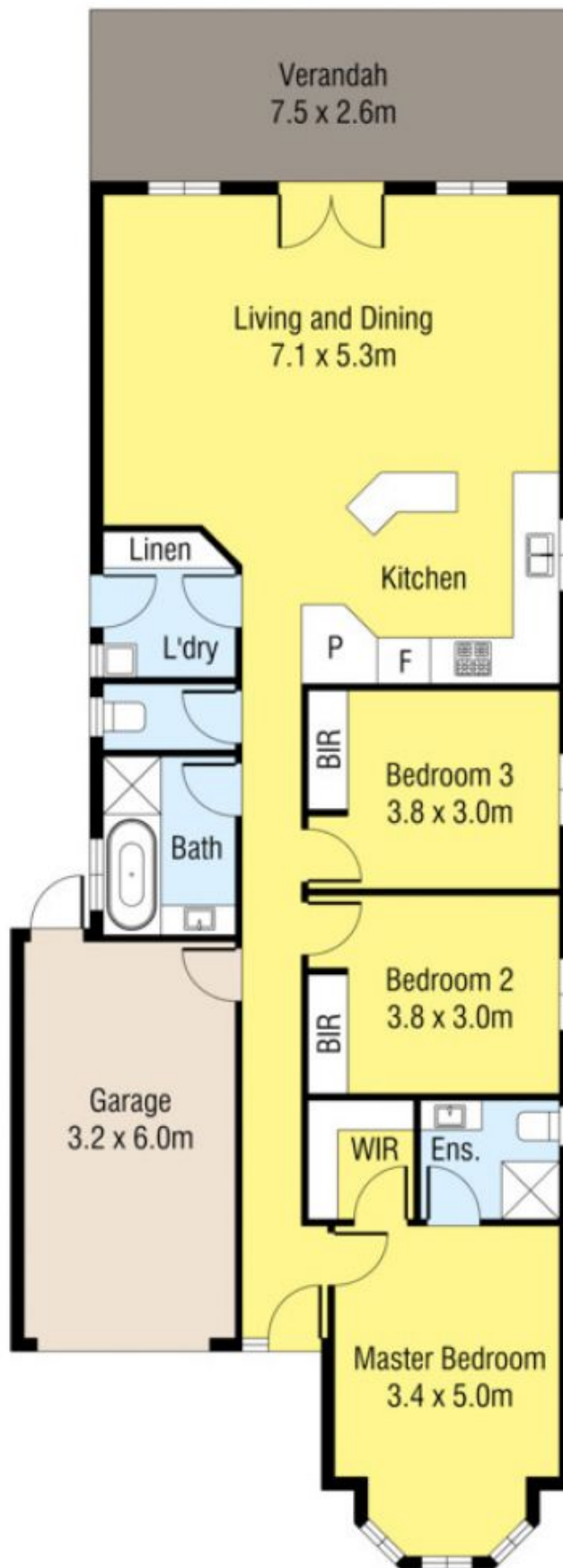
With a potential rental return of \$21,320 per annum (approx), this make for a ideal investment.

This outstanding residence is located in the heart of Caroline Springs and is perfect for investors or empty



Menka Zdraveska
03 9363 1455

43 Wyperfeld Circuit, Caroline Springs Vic 3023 



Disclaimer: Whilst we believe the contents of this document to be accurate, we suggest the prospective purchasers make any necessary enquiries to satisfy themselves. All measurements are approximate. We do not accept responsibility for any errors or omissions.