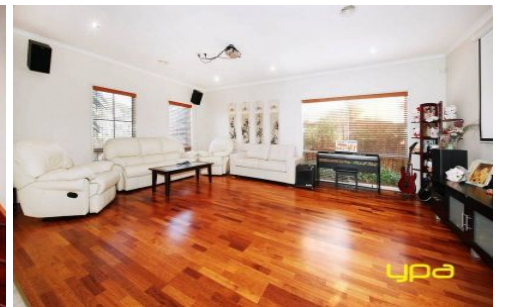


ypa



57 Furlong Road CAIRNLEA VIC

4  2  2 

Living is easy in this impressive, generously proportioned contemporary residence being located in a highly desirable location with Shopping Centres, school and public transport all within walking distance. This double storey residence encompasses four spacious bedrooms (master with full ensuite including spa bath/ parents retreat and walk in robe), all remaining bedrooms offer built in robes. The home offers four spacious living zones including formal lounge, family living, rumpus room and upstairs retreat area with an abundance of living zones, added extras include high ceilings, alarm & intercom system, stainless steel appliances, gas ducted heating, split system cooling, evaporate cooling, double garage with internal access and drive through access, professional landscaped backyard with water feature, water tank, computerised sprinkler system and an oversized pergola area perfect for all year round entertaining. With so much on offer and situated on a

View : <https://www.ypa.com.au/7386182>



