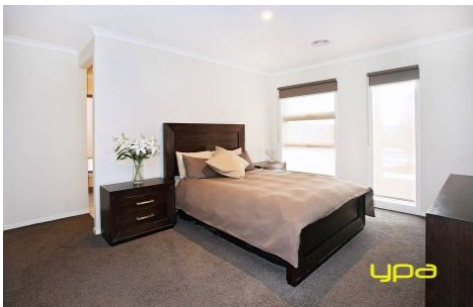


ypa



25 Dawkins Avenue PLUMPTON VIC

4 2 2

Proudly presenting this gorgeous contemporary family home with no stone left unturned, you can rest assured with all the hard work completed. Boasting over 32sq with four oversized fitted bedrooms, master with large walk in robe and full ensuite including double vanities & oversize shower, an open plan family meals arrangement leading through to a separate rumpus room with closable doors and a separate theatre room with sound proofing. Executive appointments include a modern hostess kitchen with abundance of cupboard space, stone bench tops, stainless steel appliances including 900mm upright oven, walk in pantry, gas ducted heating, evaporative cooling, double car accommodation with internal access and low maintenance gardens. This prestige six month young Carlisle home presents stunning and is a only stone's throw away from all local amenities, positioned amongst house proud owners in the sought after Aspire Estate. Avoid

View : <https://www.ypa.com.au/7386086>