



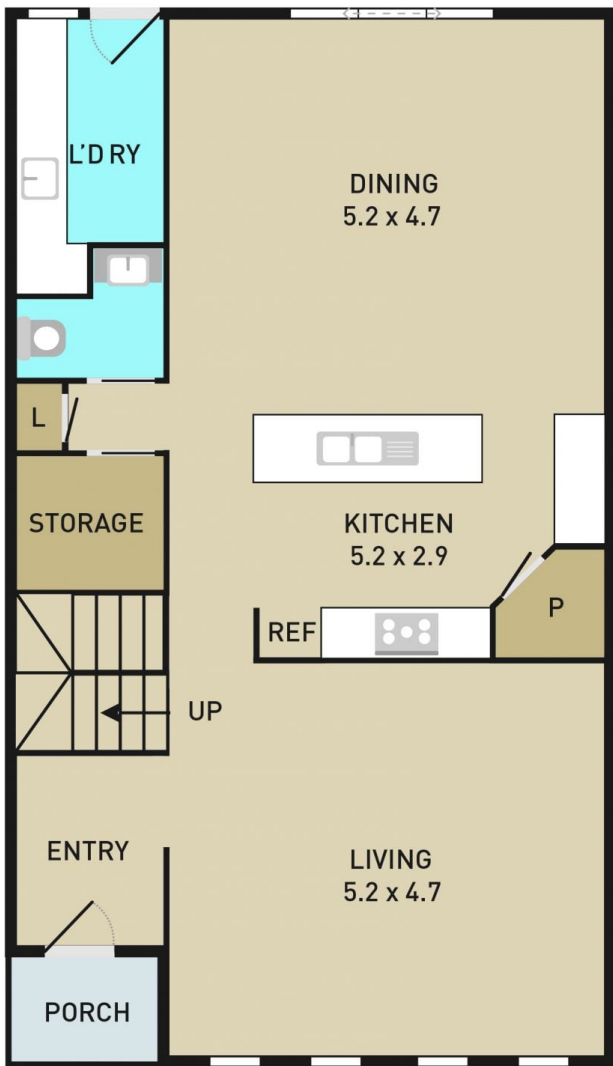
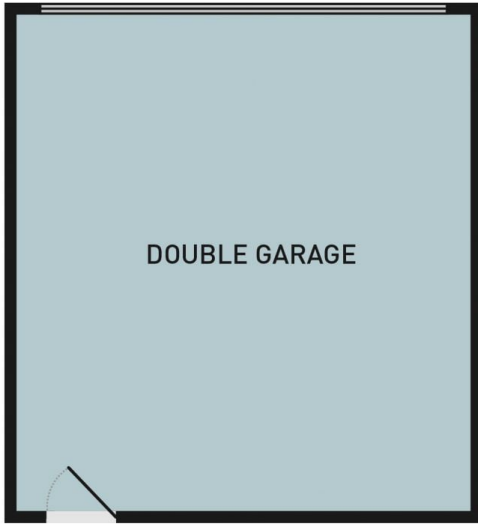
68 The Esplanade CAROLINE SPRINGS VIC

3 2 2

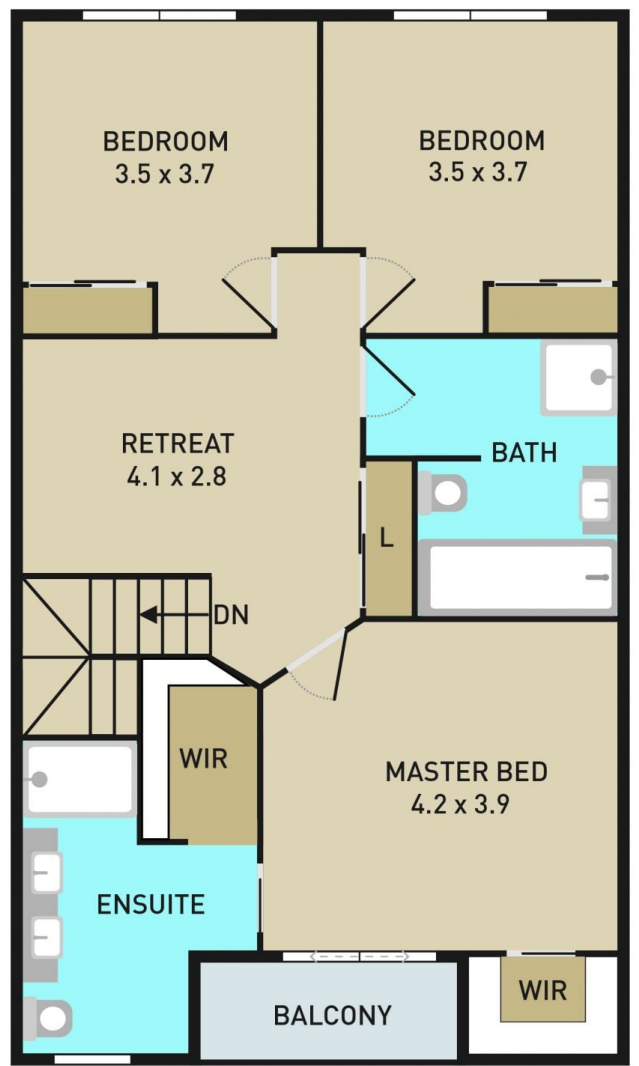
Ideally located in the popular & in-demand " The Esplanade" estate lies this superb townhouse, perfectly positioned opposite Lake Caroline & within close proximity to CS Town centre & shopping precinct, schools, public transport, West Waters Hotel & park lands. Offering a well-designed floor plan this flexible, functional property has all the comforts a first home buyer, young family/professional couple or astute investor requires!

View : <https://www.ypa.com.au/7385762>

- Master with W.I.R's, ensuite, balcony, lake views!
- Spacious front formal lounge with lake views.
- Modern kitchen with stone tops & SS appliances.
- Light filled meals & adjoining family area.
- Large upstairs retreat/ study with skylight.
- Double remote garage, storage room.
- Concreted courtyard, ideal for entertaining.
- Alarm, split system heating/cooling, high ceilings



GROUND FLOOR



FIRST FLOOR