



2 Shine Walk Epping VIC

4 🏠 2 🚗 2 🚗

Positioned in a fantastic location of Epping with Aurora Park directly at your doorstep, this home is perfect for the first home buyer, investor or young family!

Upon entering, this brilliant architect designed modernist classic home with its captivating huge frontage, flaunts streams of natural light throughout, architectural flair highlights vault ceilings & solid timber flooring.

Offering three large bedrooms with built in robes, master with ensuite & open study large enough to be a multifunction room.

Impressive well equipped kitchen complete with stone bench, free standing oven overlooking the meals & a stunning family lounge area.

Other features include; refrigerated air conditioner/heater, double car remote garage with internal access and ample decked courtyard. Within minutes away to Aurora Village Shopping Centre, schools, transport and parklands it's an

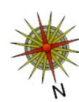
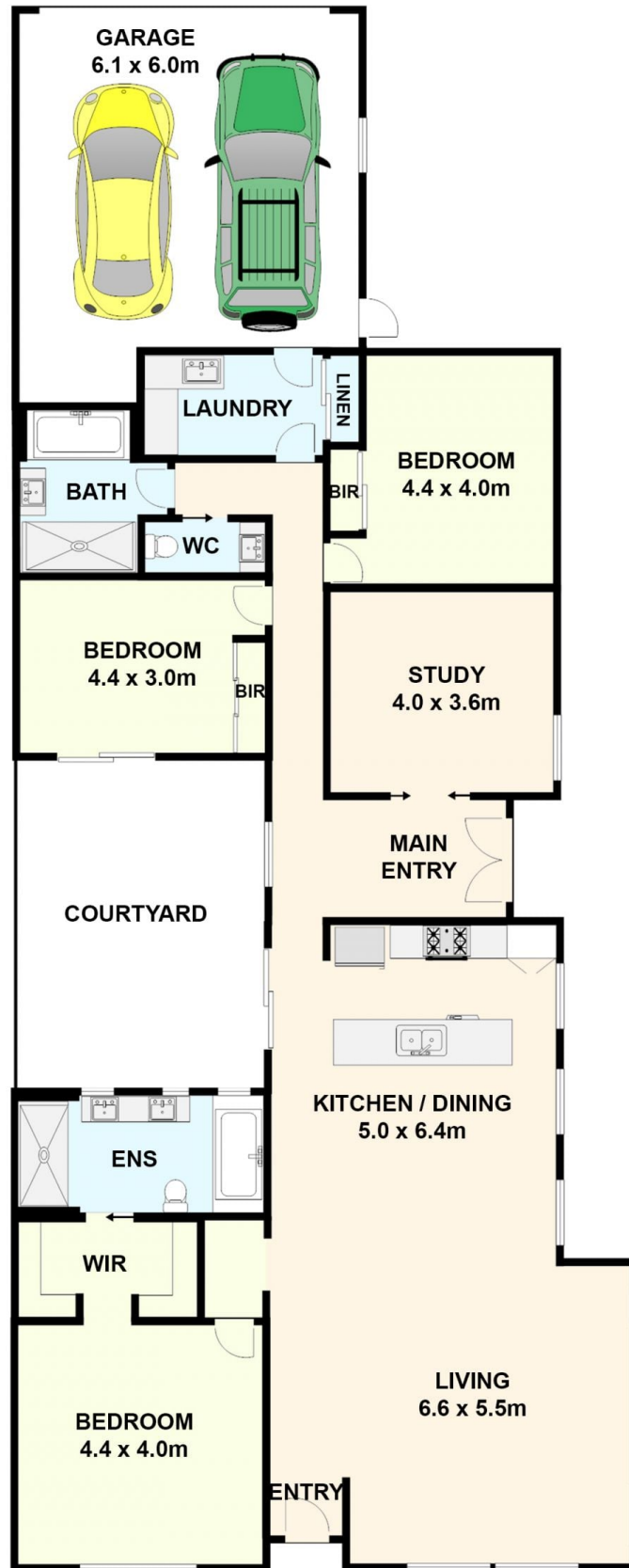
Price : \$ 700,000
Land Size : 441 sqm
View : <https://www.ypa.com.au/7384178>



Peter Colella
0421 346 326



Monique Cukavac
0449624617



2 Shine Walk, Epping

All data and dimensions shown in this sketch are approximate