



31 Wittick Street Darley VIC

3 2 2

Welcome to 31 Wittick Street, Darley - a large stunning three bedroom, 2.5 bathroom home that exudes elegance and sophistication. Nestled in a quiet and peaceful area of Darley, this property boasts a spacious open-plan living area that seamlessly flows out to a large deck perched up high with sprawling southerly views over Darley and Bacchus Marsh, perfect for entertaining or relaxing with family and friends.

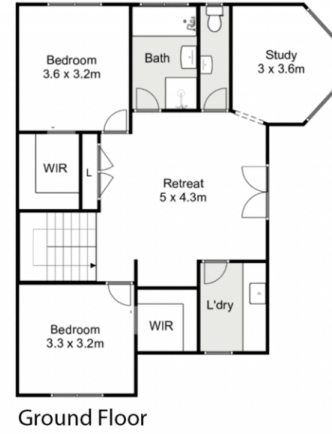
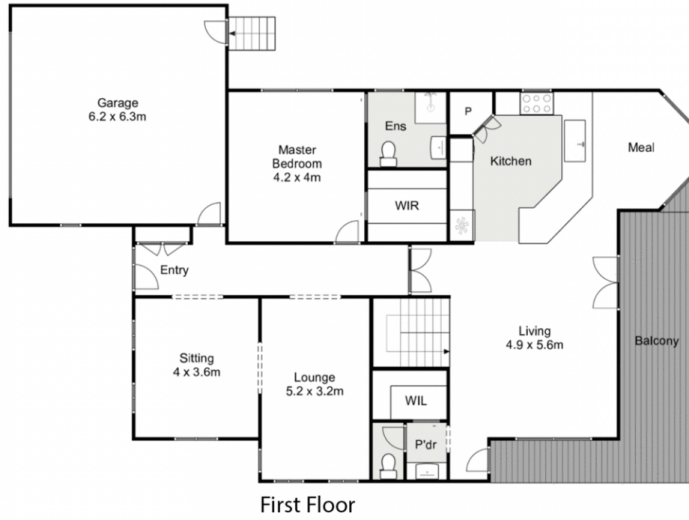
The recently updated gourmet kitchen is a chef's dream, complete with high-end stainless steel appliances, stone countertops and ample cabinetry for storage. The generous formal lounge area is accompanied by a sitting room/2nd study area with feature cornices and plantations shutters and bathed in natural light.

All bedrooms are generously sized and feature spacious

Price : \$ 800,000
Land Size : 655 sqm
View : <https://www.ypa.com.au/7383799>



Jodi Nash
0419 342 120



31 Wittick Street, Darley

Whilst every attempt has been made to ensure the accuracy of the floor plan contained here, measurements of doors, windows, rooms and any other items are approximate and no responsibility is taken for any error, omission, or mis-statement. This plan is for illustrative purposes only and should be used as such by any prospective purchaser. The services, systems and appliances shown have not been tested and no guarantee as to their operability or efficiency can be given.

