



**404/167 Gladstone Street South Melbourne VIC**

1 1

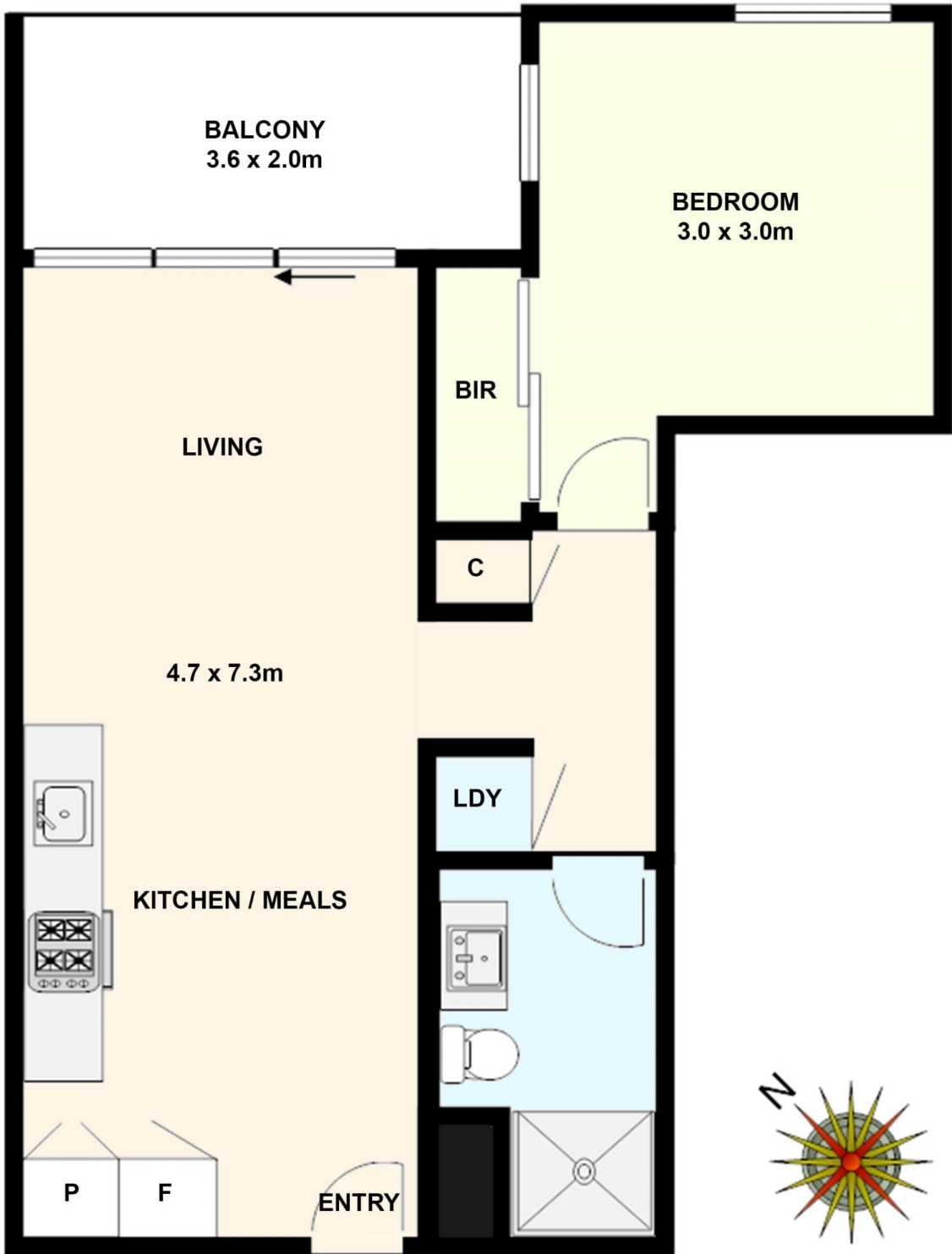
**View :** <https://www.ypa.com.au/7383760>

Throw away the car keys with this fabulous 1-bedroom apartment conveniently positioned with all amenities only minutes away. 10 min walk to supermarkets, cafes, restaurants, shops, the Iconic South Melbourne Market, 15 min walk to Crown Casino/South Wharf-DFO, 20 min walk to South Melbourne/Port Melbourne beach, 4 min walk (300 metres) to Montague Station & only a 6 min walk (500 metres) to North Port station.



**Bassam Tofaili**  
0477 972 229

Modern open living spaces, a streamlined kitchen with Smeg stainless appliances, Fisher & Paykel integrated large dishwasher & a modern tiled splashback. The main bedroom has built in mirrored robes with a magnificent view of the Melbourne City Skyline, central bathroom, leading out from the living area a good-sized balcony with views of Melbourne City Skyline & a European laundry. Other features include reverse cycle split system heating/air



**404/167 Gladstone Street, South Melbourne.**  
*All data and dimensions shown in this sketch are approximate.*