



Level 14/1404/109 Clarendon Street Southbank VIC

2  **1**  **1** 

Live amongst all the hustle & bustle right in the heart of Melbourne in this sleek 2-bedroom apartment. Presenting open living zones, stunning kitchen with abundance of space, stone benches, glass splashbacks, stainless appliances, dishwasher, floating timber floors, double glazed floor to ceiling windows & a reverse cycle heating-cooling split system. Main bedroom has built in robes with dual access to a generous sized bathroom & the open living area leads through to a balcony with views of Port Phillip Bay.

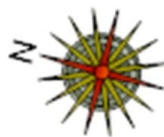
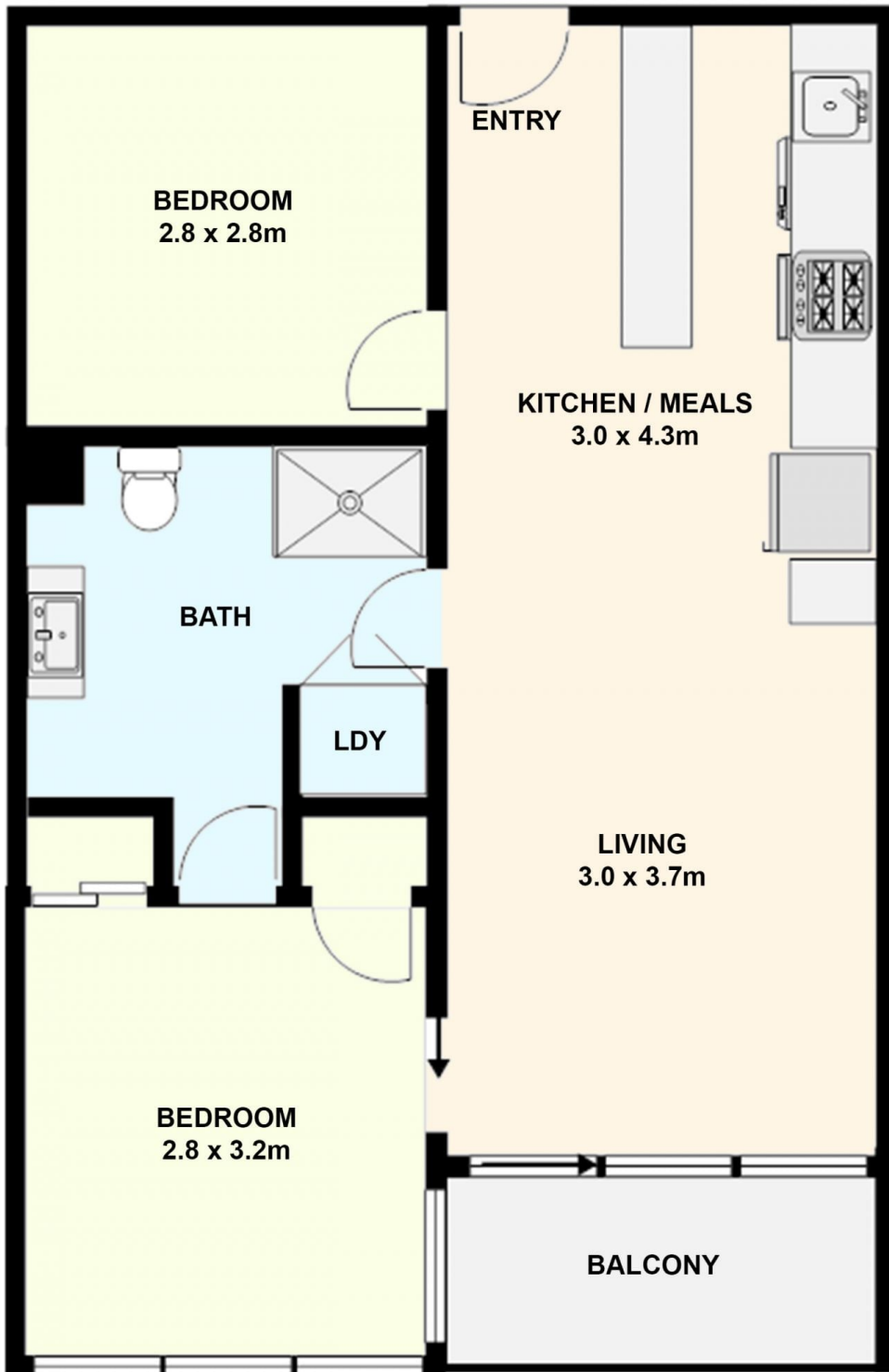
The location is perfect only minutes to the Crown Casino complex, CBD, South Melbourne Market, Southern Cross Station, Melbourne Exhibition & Convention Centre, Southbank restaurants, cafes, Boyd Park & Community Hub, DFO shopping, tram stops at your doorstep & supermarkets within minutes.

Price : \$ 475,000

View : <https://www.ypa.com.au/7383572>



Bassam Tofaili
0477 972 229



1404/109 Clarendon Street, Southbank

All data and dimensions shown in this sketch are approximate.