

22/15 Liardet Street Port Melbourne VIC

1 1 1

Tucked away in pristine garden tranquillity is this amazing apartment, situated at the art deco complex 'The Park Apartments'. Positioned impeccably with relaxed access to public transport & just about walking distance to everything; Bay St shops, cafes, restaurants, pubs, supermarkets, places of worship, schools, child care, Gasworks Arts Park & Port Melbourne & South Melbourne beach only a 10 minute walk.

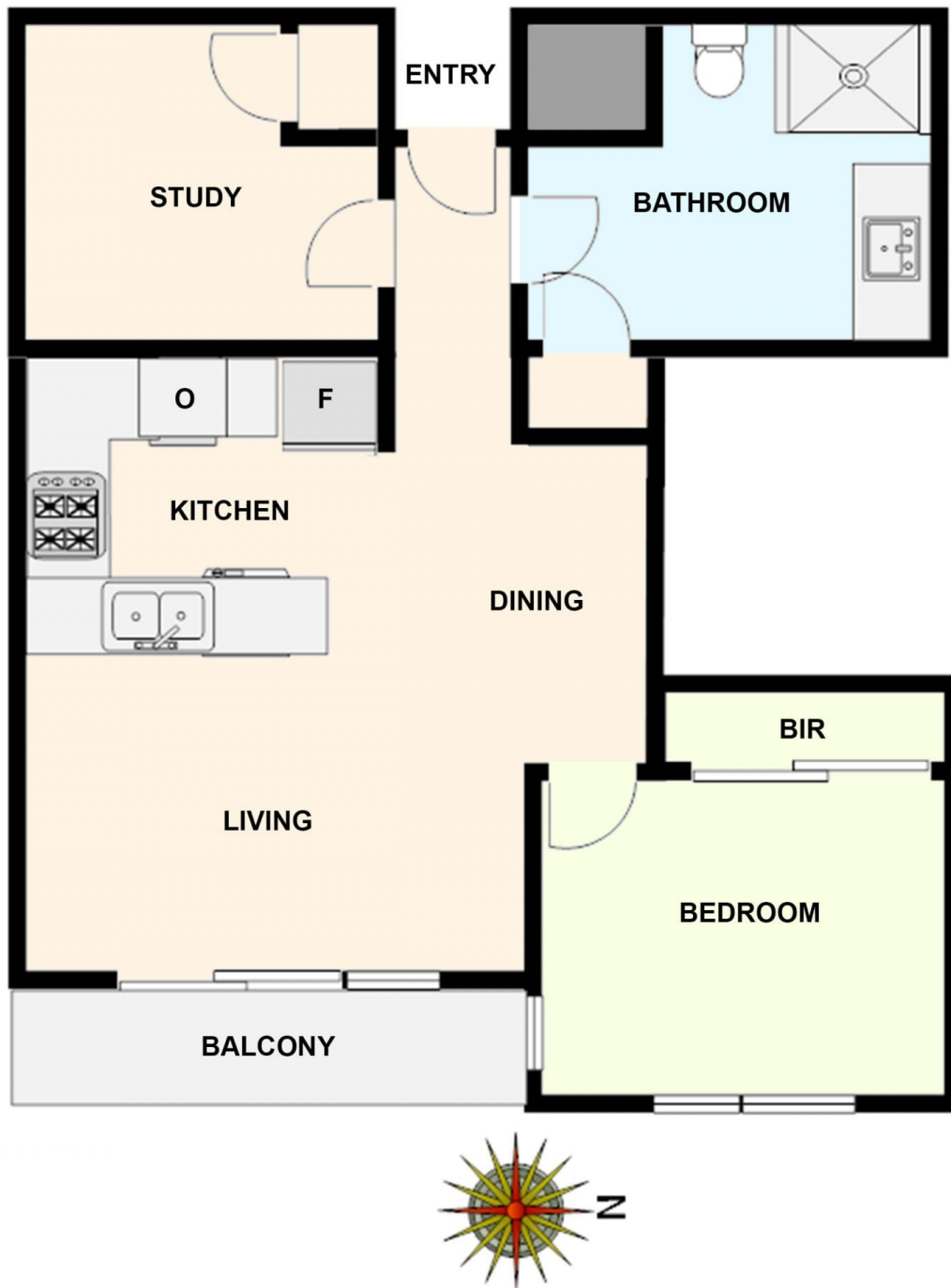
Presenting; spacious main bedroom with built in robes, study or nursery, stylish bathroom, modern kitchen with ample cupboard space adjoining to an open plan informal living area beaming plenty of natural light, stone benches, glass splashbacks, Smeg appliances & a new dishwasher.

A pleasant surprise when you step out onto the balcony incredible views of the Melbourne Skyline & picturesque

View : <https://www.ypa.com.au/7383565>



Bassam Tofaili
0477 972 229



22/15 LIARDET STREET, PORT MELBOURNE
Sketch showing relative positions of rooms but not to scale