



19 Wittick Street Darley VIC

4 2 2

Situated in a quiet area of Darley, this immaculately presented abode welcomes you to a home of impressive proportions & views from many vantage points.

Internally, the home comprises of four bedrooms, master bedroom fitted with upgraded window furnishings is further complimented by the modern ensuite with stone bench to vanity and large walk in robe. Additional bedrooms all feature double door built in robes, quality fittings and incorporate the surrounding view as best as possible.

The front formal lounge room is large in size with sliding door access out to the decked alfresco area. The open feel is further complimented by hardwood timber floors and ornate corning, enhancing the features that give the property its homely feel.

Land Size : 657 sqm

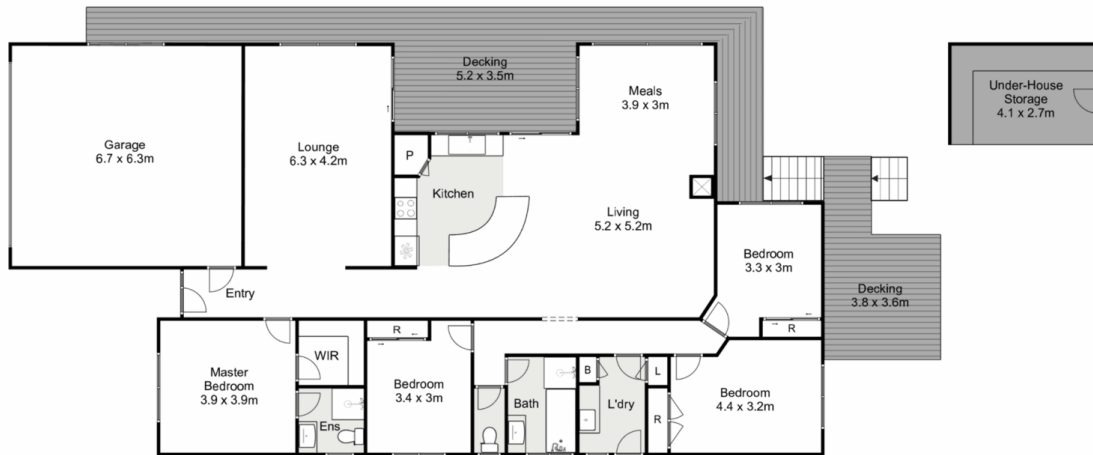
View : <https://www.ypa.com.au/7383430>



Shane O'Brien
0431 766 082



Jodi Nash
0419 342 120



19 Wittick Street, Darley

YPA

Whilst every attempt has been made to ensure the accuracy of the floor plan contained here, measurements of doors, windows, rooms and any other items are approximate and no responsibility is taken for any error, omission, or mis-statement. This plan is for illustrative purposes only and should be used as such by any prospective purchaser. The services, systems and appliances shown have not been tested and no guarantee as to their operability or efficiency can be given.

