



## 17 Slattery Court Maddingley VIC

4  2  2 

This wonderfully presented and spacious family home will tick all of your boxes.

This stylish home comprises of four large bedrooms, master suite with large and walk in wardrobe and ensuite, an extremely spacious kitchen further complimented by sleek stainless steel appliances, ample bench space and storage, overlooking the generous meals and living area that leads perfectly outdoors.

Moving outside, this backyard has the WOW factor that you've been searching for - featuring a concrete space perfect for entertaining all year round, whilst surrounded by low maintenance retaining walls and landscaping with more than enough room for the kids to play plus potential for side access.

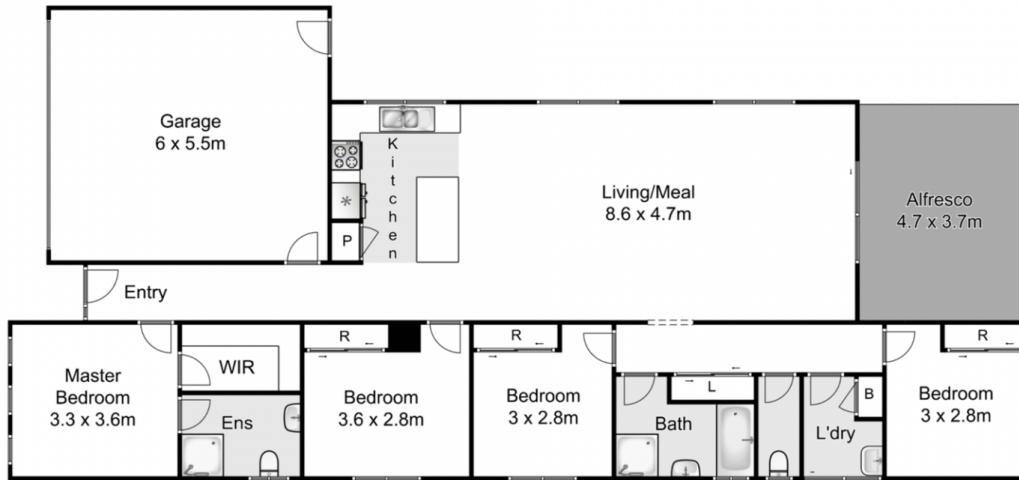
**Price** : \$ 520,000  
**Land Size** : 617 sqm  
**View** : <https://www.ypa.com.au/7383429>



**Lucas Ekerbicer**  
0418 465 892



**Izabel Dusik**  
0421 833 010



## 17 Slattery Court, Maddingley

Whilst every attempt has been made to ensure the accuracy of the floor plan contained here, measurements of doors, windows, rooms and any other items are approximate and no responsibility is taken for any error, omission, or mis-statement. This plan is for illustrative purposes only and should be used as such by any prospective purchaser. The services, systems and appliances shown have not been tested and no guarantee as to their operability or efficiency can be given.

