



25 Carey Crescent Bacchus Marsh VIC

4 2 2

Positioned in a quite location of Bacchus Marsh on a rare 837m² (approx.) block is this large family home, consisting of four great size bedrooms, master suite with walk in robe and ensuite whilst the remaining bedroom all with built in robes and are serviced by the light filled central bathroom with added feature of a spa bath.

Entering the home, you are instantly greeted by a large living area complemented by a study, the kitchen offers stainless steel appliances including dishwasher and an ample amount of bench and cupboard space, overlooking the generous sized meals area with adjacent rumpus room truly showcasing how amazing this home is even for the largest of families.

Moving outside you are provided with an entertaining area in a league of its own, featuring a very generously sized

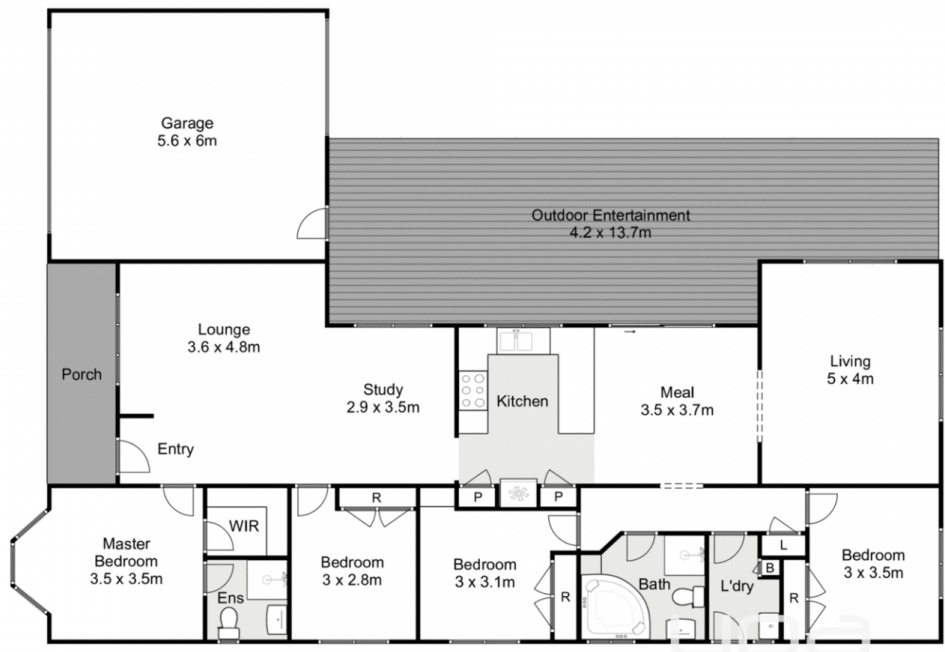
Price : \$ 770,000
Land Size : 837 sqm
View : <https://www.ypa.com.au/7383425>



Shane O'Brien
0431 766 082



Hayley Beri
03 5310 1333



25 Carey Crescent, Bacchus Marsh



Whilst every attempt has been made to ensure the accuracy of the floor plan contained here, measurements of doors, windows, rooms and any other items are approximate and no responsibility is taken for any error, omission, or mis-statement. This plan is for illustrative purposes only and should be used as such by any prospective purchaser. The services, systems and appliances shown have not been tested and no guarantee as to their operability or efficiency can be given.

