



11 Gleeson Court Maddingley VIC

3  2  2 

This exciting piece of modern-day real estate, positioned in the highly sought-after seclusion of the desired Hillview district, boasting one of the estates best positioned properties. This gem offers functionality and quality, all in a great location, close to shops, schooling, and Bacchus Marsh Train Station, it must be seen to be believed.

This wonderful home comprises of three bedrooms, two with built in wardrobes and a master suite equipped with full walk-in robe and ensuite.

The spacious formal living area of this home complements the open plan design, with central lounge, and meals area all great size and position. The kitchen offers plenty of bench space and storage for all needs, finished with quality stainless steel appliances.

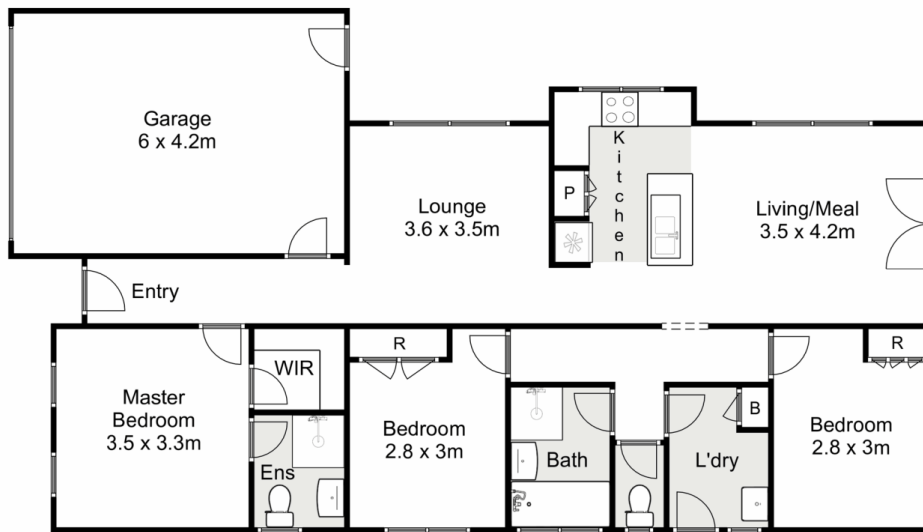
Price : \$ 500,000
Land Size : 333 sqm
View : <https://www.ypa.com.au/7383398>



Shane O'Brien
0431 766 082



Hayley Beri
03 5310 1333



11 Gleeson Court, Maddingley

Ypa

Whilst every attempt has been made to ensure the accuracy of the floor plan contained here, measurements of doors, windows, rooms and any other items are approximate and no responsibility is taken for any error, omission, or mis-statement. This plan is for illustrative purposes only and should be used as such by any prospective purchaser. The services, systems and appliances shown have not been tested and no guarantee as to their operability or efficiency can be given.

