



59 Cromarty Circuit Darley VIC

4 2 2

This neat and tidy family home offers you the opportunity to enter the property market at an affordable price. Comprising of a study, 4 bedrooms all with built in robes, master with walk in robe, ensuite, central bathroom, kitchen with adjoining meals/family room. Also features include ducted heating, split system cooling, kitchen with ample cupboard and bench space. , low maintenance gardens, deck area for all your outdoor living, situated on a 405m2 allotment (approx.) you'll never want to leave your private oasis. An inspection will not disappoint.

(Photo ID is Required at all Open For Inspections)

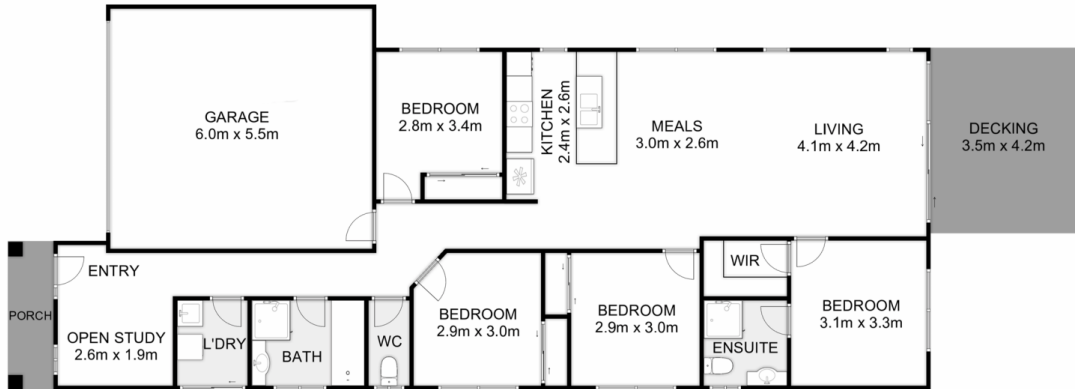
At YPA Bacchus Marsh Our Service Will Move You

DISCLAIMER: Every precaution has been taken to establish the accuracy of the above information but it does

Price : \$ 550,000
Land Size : 406 sqm
View : <https://www.ypa.com.au/7383394>



Vickie Ramon
0403 194 621



59 Cromarty Circuit, Darley

ypa

Whilst every attempt has been made to ensure the accuracy of the floor plan contained here, measurements of doors, windows, rooms and any other items are approximate and no responsibility is taken for any error, omission, or mis-statement. This plan is for illustrative purposes only and should be used as such by any prospective purchaser. The services, systems and appliances shown have not been tested and no guarantee as to their operability or efficiency can be given.

