



20 Foyle Crescent Weir Views VIC

3  2  2 

This exciting piece of modern-day Real Estate positioned in the highly sought-after seclusion of Weir View's most distinguished pocket on a great size 450m2 (approx.) block of land, this property is completed to the definition of luxury with inclusions and upgrades that must be seen to be believed.

This wonderful home comprises of three bedrooms all with built in robes, feature master bedroom with large built-in robe, ensuite and a fully equipped central bathroom.

The well designed open modern kitchen featuring stainless steel appliances, stone benchtops a great sized walk-in pantry, adjacent to this is an open family & meals area which seamlessly allows the natural light to flow through.

With the interior of the property boasting a large range of

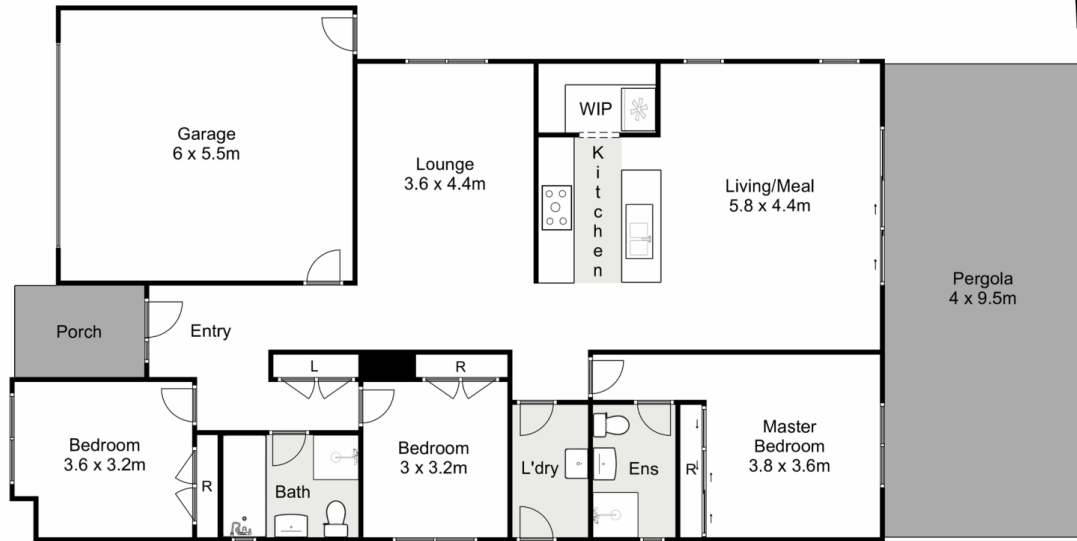
Price : \$ 580,000
Land Size : 450 sqm
View : <https://www.ypa.com.au/7383383>



Shane O'Brien
0431 766 082



Hayley Beri
03 5310 1333



20 Foyle Crescent, Weir Views

ypa

Whilst every attempt has been made to ensure the accuracy of the floor plan contained here, measurements of doors, windows, rooms and any other items are approximate and no responsibility is taken for any error, omission, or mis-statement. This plan is for illustrative purposes only and should be used as such by any prospective purchaser. The services, systems and appliances shown have not been tested and no guarantee as to their operability or efficiency can be given.

